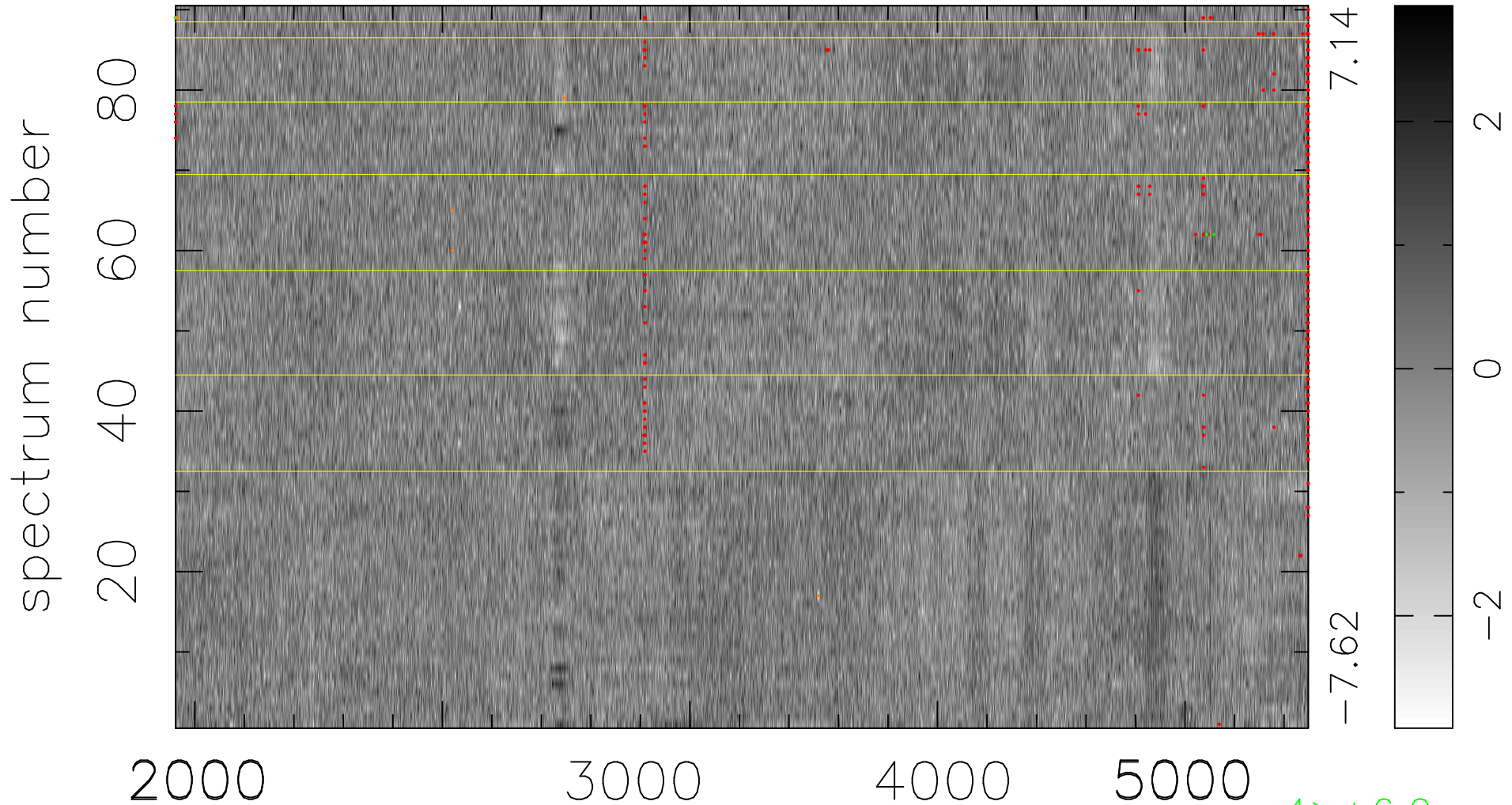


$$\chi(\lambda, t) = (\text{Data} - \text{Model AC}_5\text{F}) / \sigma \chi$$

$$\chi^2 / (411840 - 4961) = 0.927 \Rightarrow 0.986$$

4576 × 90



7.14

-7.62

2

0

-2

bad:351=0.085% λ (Å) $z = 0.83959$

4 > +6.0σ

6 < -6.0σ