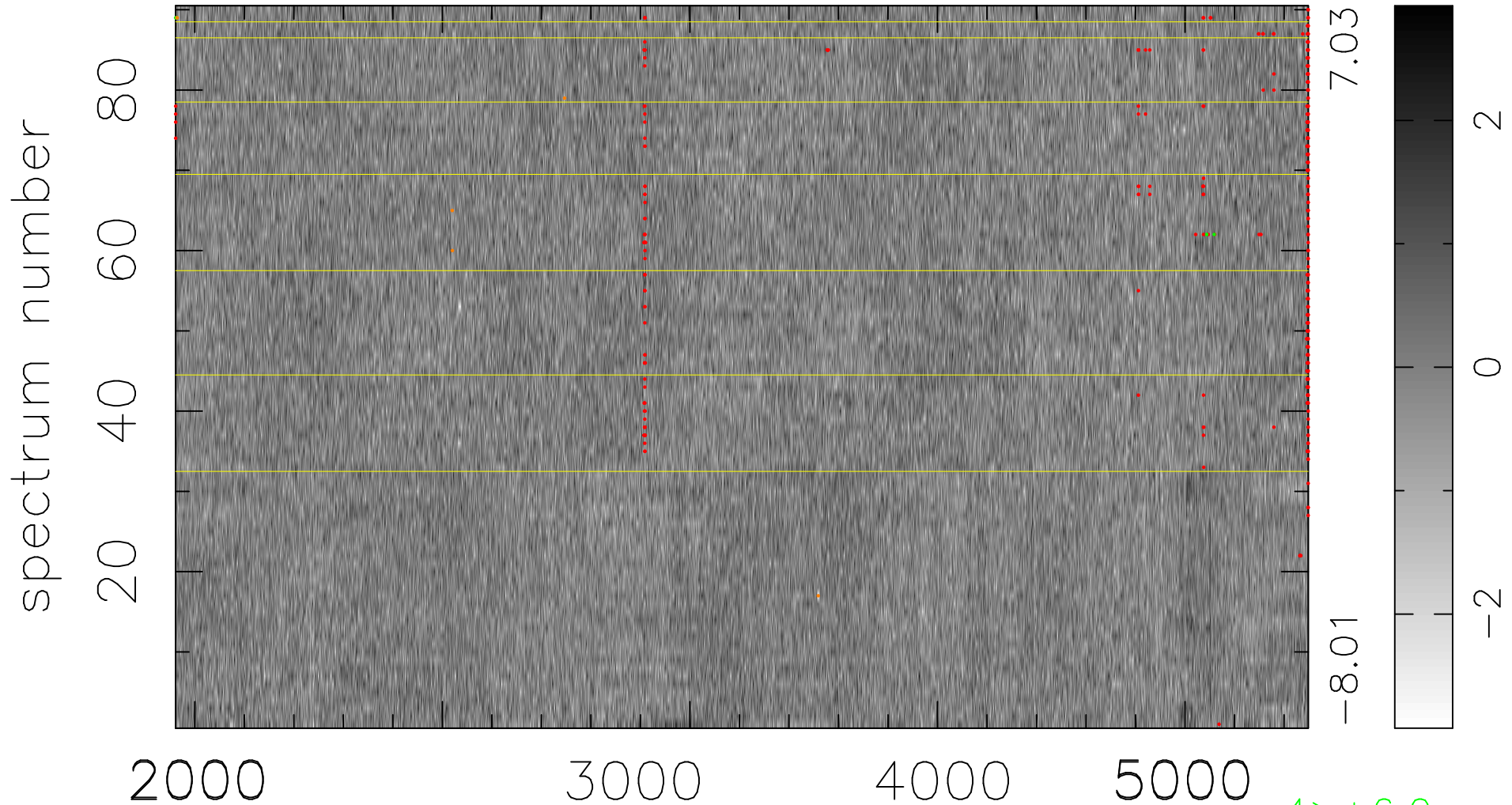


$$\chi(\lambda, t) = (\text{Data} - \text{Model } \text{AC}_5\text{B}_3\text{F}) / \sigma \chi$$

$$\chi^2 / (411840 - 5114) = 0.914 \Rightarrow 0.988$$

4576x90



7.03
-8.01

2
0
-2

bad:351=0.085% λ (Å) $z = 0.83959$

4 > +6.0σ

6 < -6.0σ