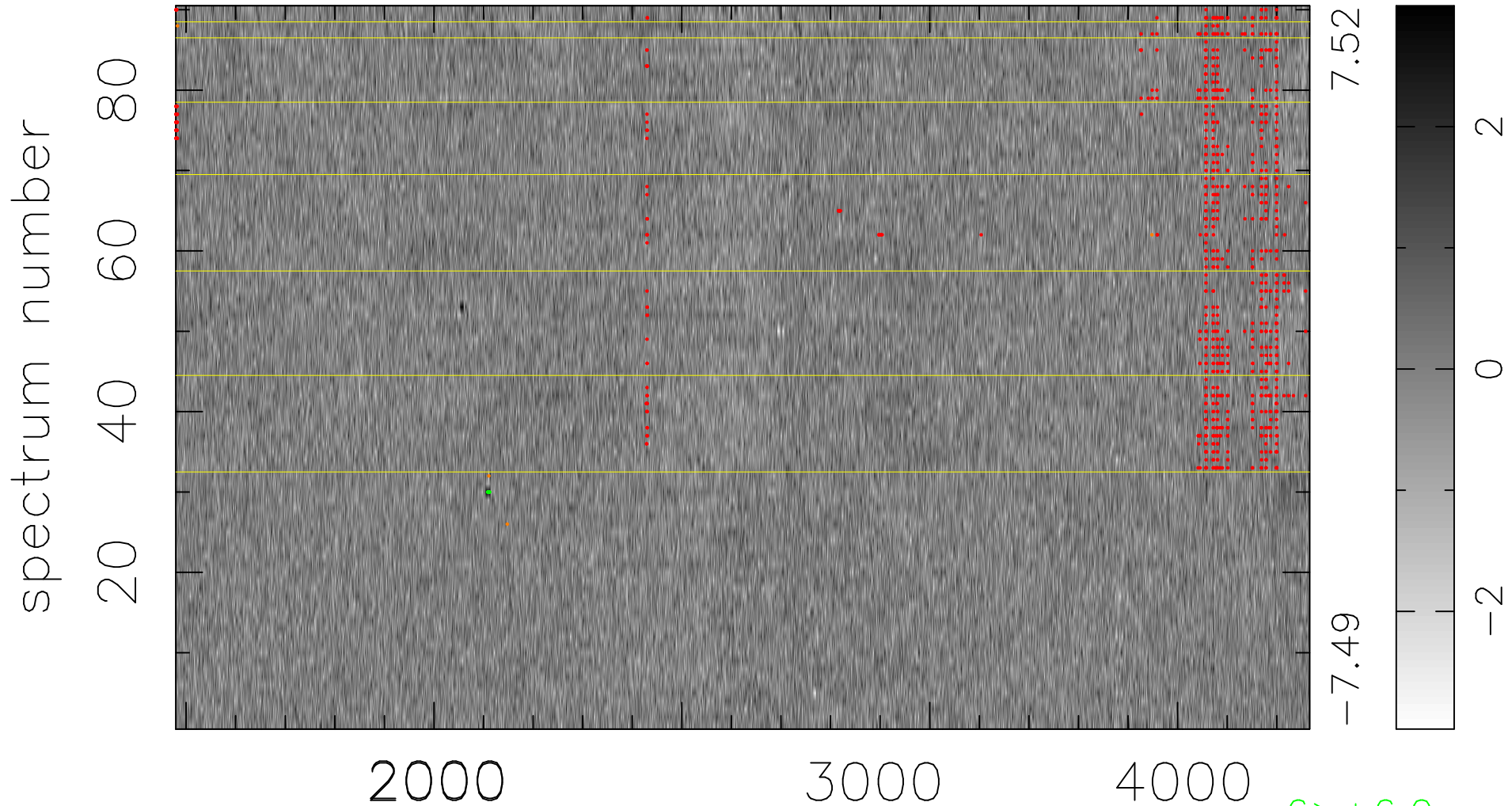


$$\chi(\lambda, t) = (\text{Data} - \text{Model } \text{AC}_5\text{B}_3\text{F}) / \sigma \chi$$

$$\chi^2 / (411750 - 5114) = 0.936 \Rightarrow 1.008$$

4575x90



7.52

-7.49

2

0

-2

6 > +6.0σ

4 < -6.0σ

bad:767=0.19%

λ (Å) z = 1.29374