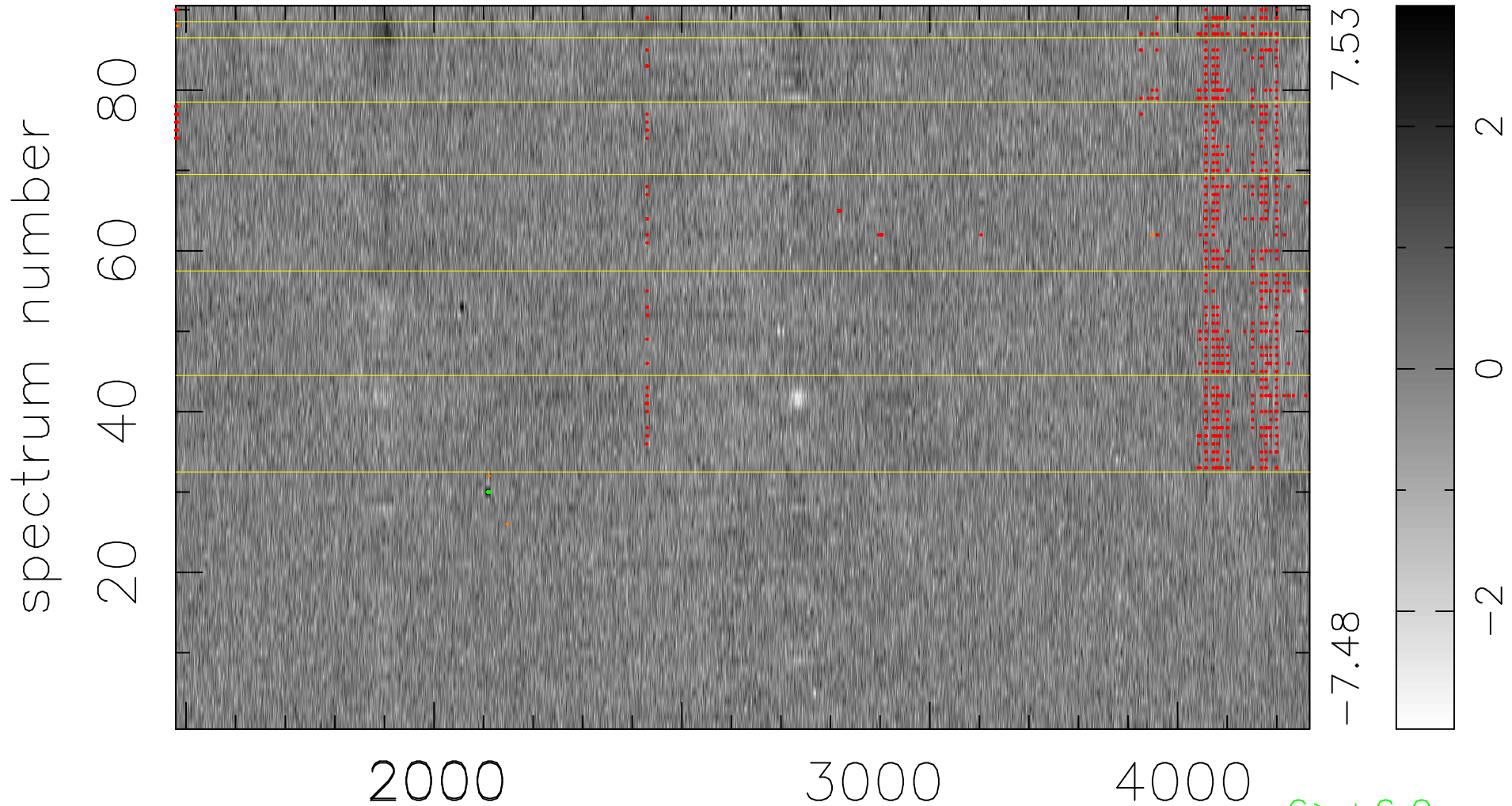


$$\chi(\lambda, t) = (\text{Data} - \text{Model } AC_5) / \sigma \chi$$

$$\chi^2 / (411750 - 4871) = 0.942 \Rightarrow 1.007$$

4575x90



bad:767=0.19% λ (Å) $z = 1.29374$

6 > +6.0σ

4 < -6.0σ