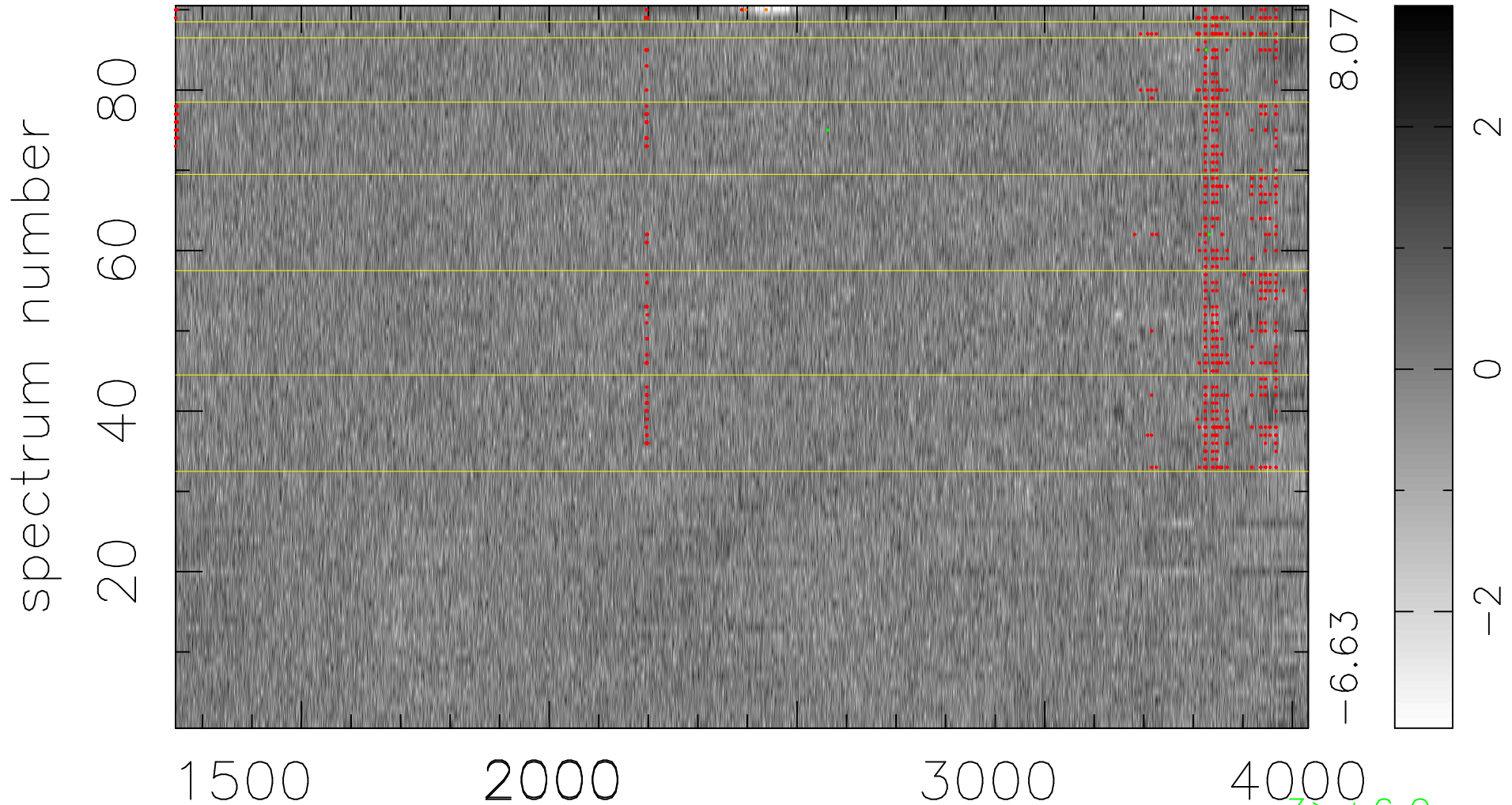


$$\chi(\lambda, t) = (\text{Data} - \text{Model } \text{AC}_5\text{B}_4\text{F}) / \sigma \chi$$

$$\chi^2 / (411570 - 5187) = 1.066 \Rightarrow 1.007$$

4573x90



bad:681=0.17%

λ (Å) $z = 1.55331$

3 > +6.0σ

2 < -6.0σ