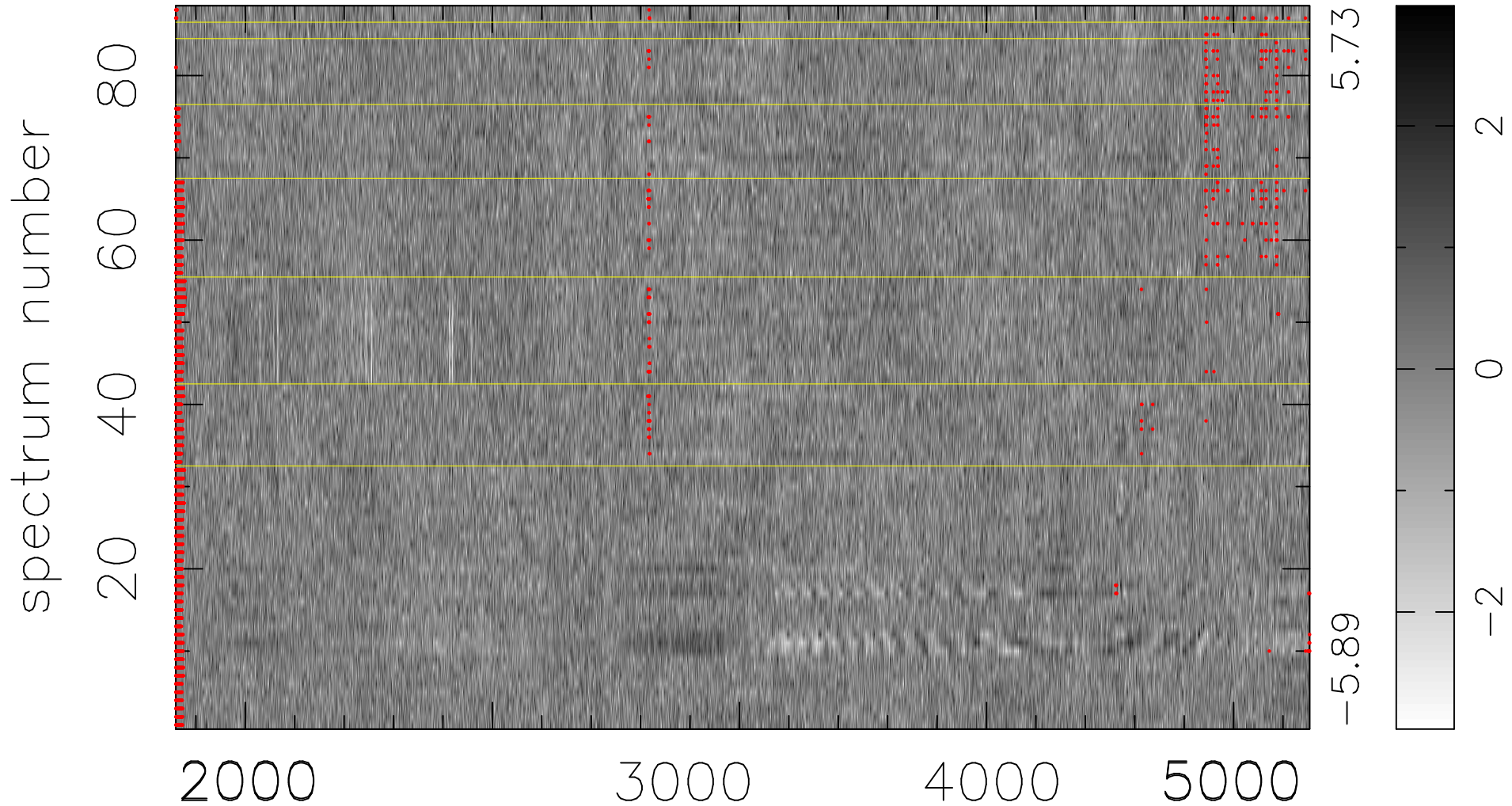


$$\chi(\lambda, t) = (\text{Data} - \text{Model } \text{AC}_5\text{B}_4\text{F}) / \sigma \chi$$

$$\chi^2 / (403920 - 5181) = 0.970 \Rightarrow 1.007$$

4590x88



bad:2380=0.59% λ (Å) $z = 0.91916$