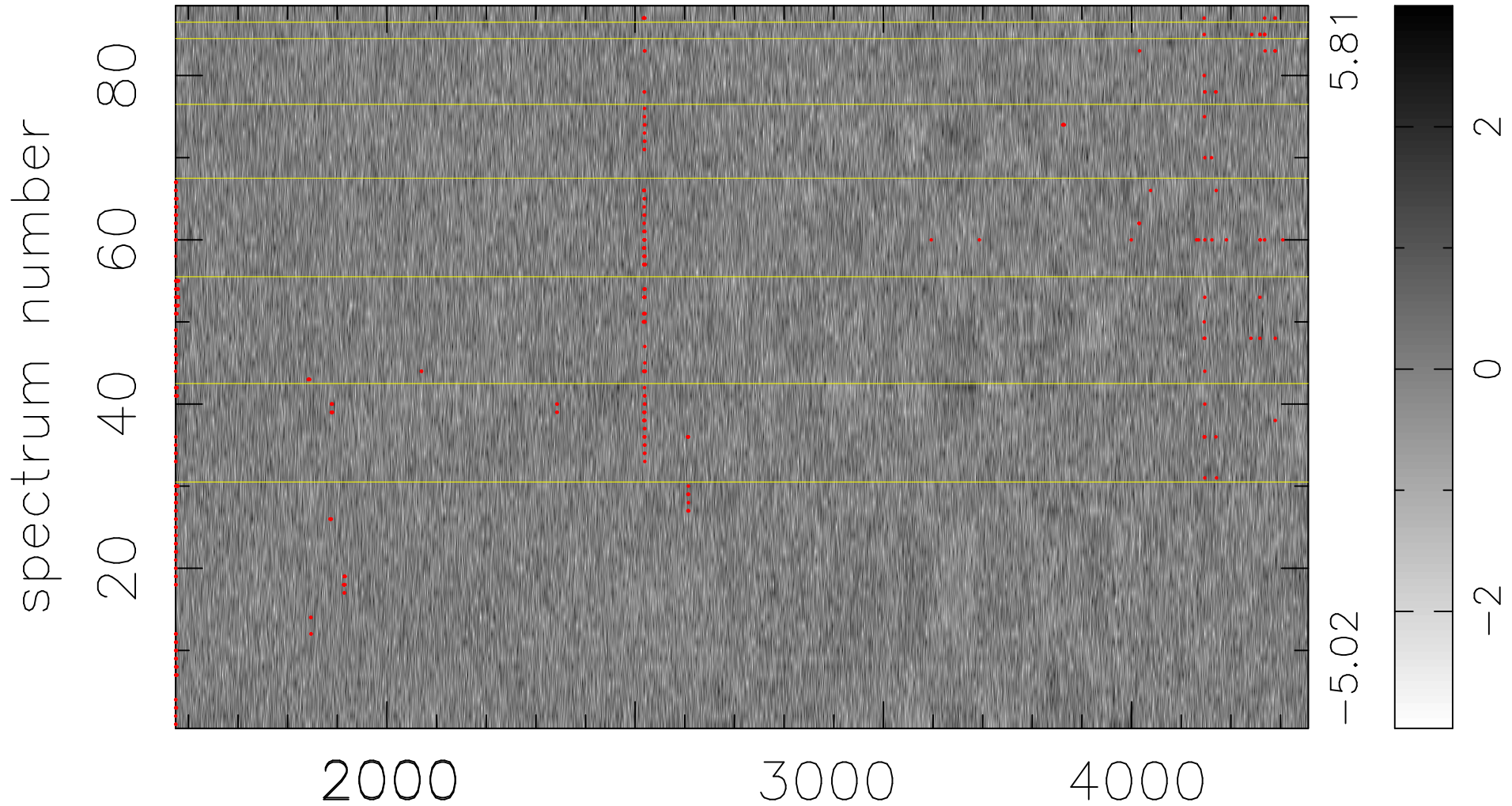


$$\chi(\lambda, t) = ( \text{Data} - \text{Model } \text{AC}_5\text{B}_4\text{F} ) / \sigma \chi$$

$$\chi^2 / (401632 - 5185) = 0.947 \Rightarrow 1.007$$

4564 × 88



bad:434=0.11%     $\lambda$  (Å)     $z = 1.20158$