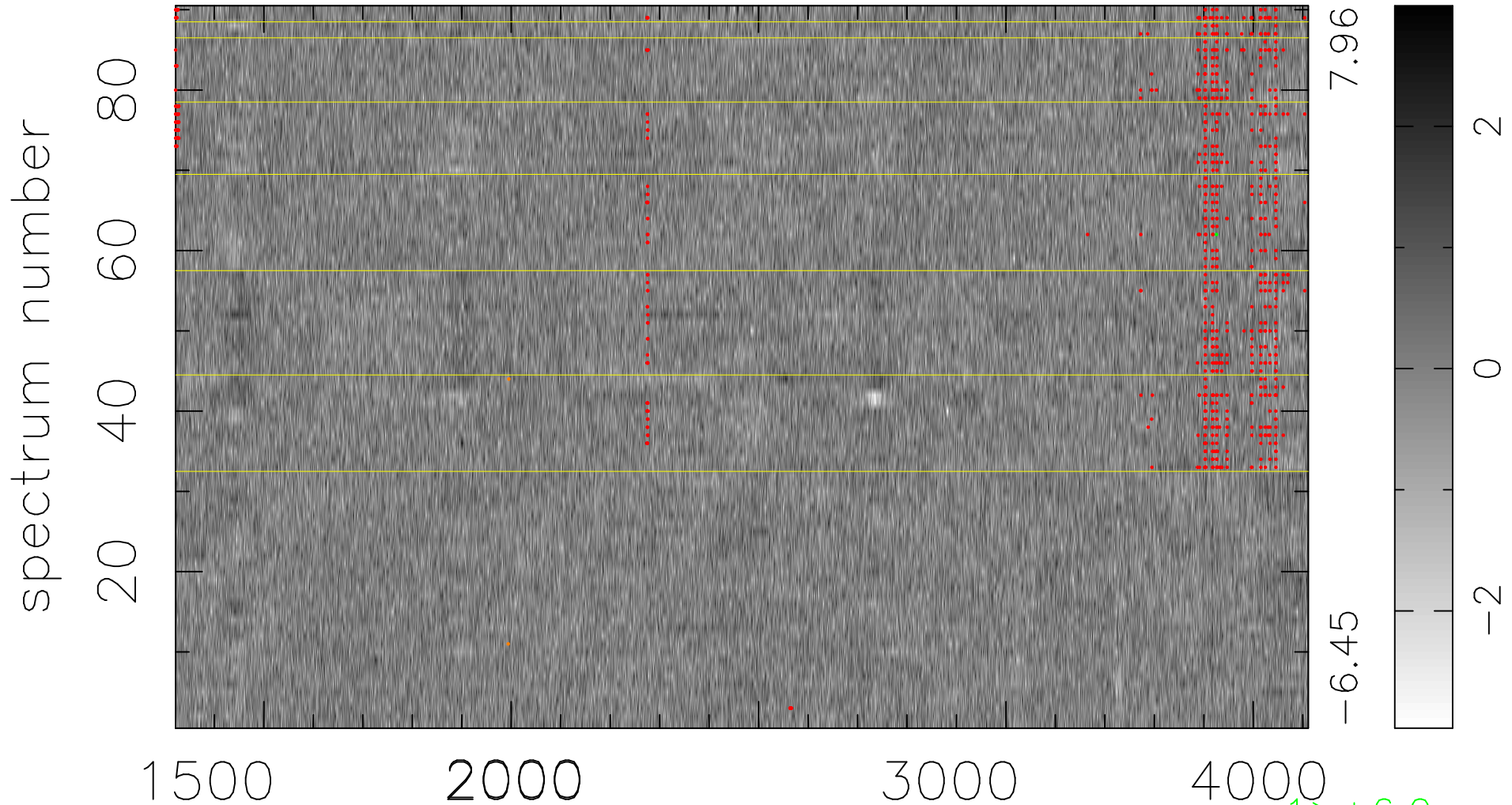


$$\chi(\lambda, t) = (\text{Data} - \text{Model AC}_5\text{F}) / \sigma \chi$$

$$\chi^2 / (412200 - 5061) = 0.951 \Rightarrow 1.007$$

4580x90



7.96

-6.45

2

0

-2

1 > +6.0σ

2 < -6.0σ

bad:794=0.19%

λ (Å) z = 1.46252