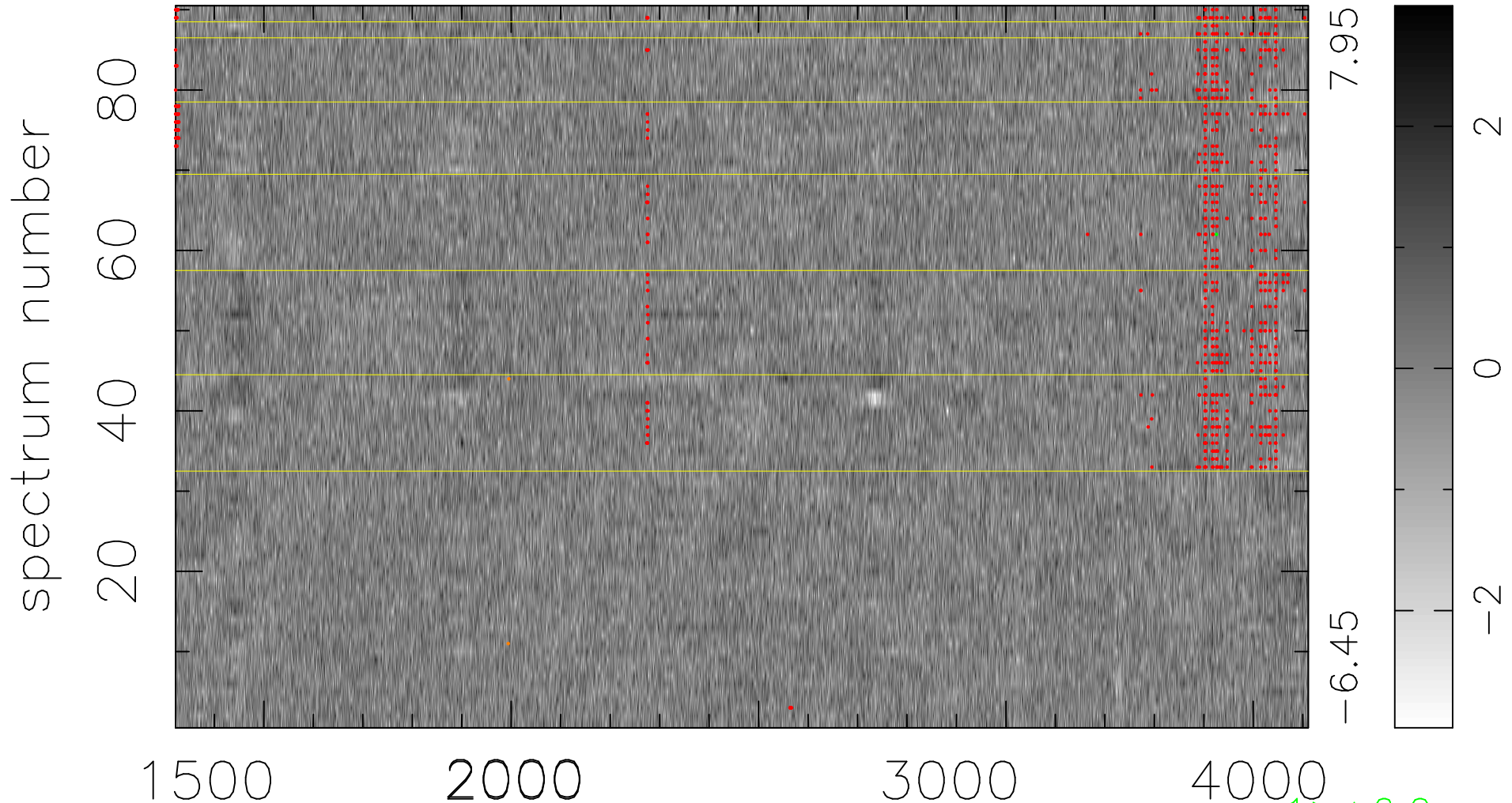


$$\chi(\lambda,t) = (\text{Data} - \text{Model } AC_5) / \sigma \chi$$

$$\chi^2 / (412200 - 4971) = 0.951 \Rightarrow 1.007$$

4580x90



bad:794=0.19%

λ (Å) $z = 1.46252$

1 > +6.0σ

2 < -6.0σ