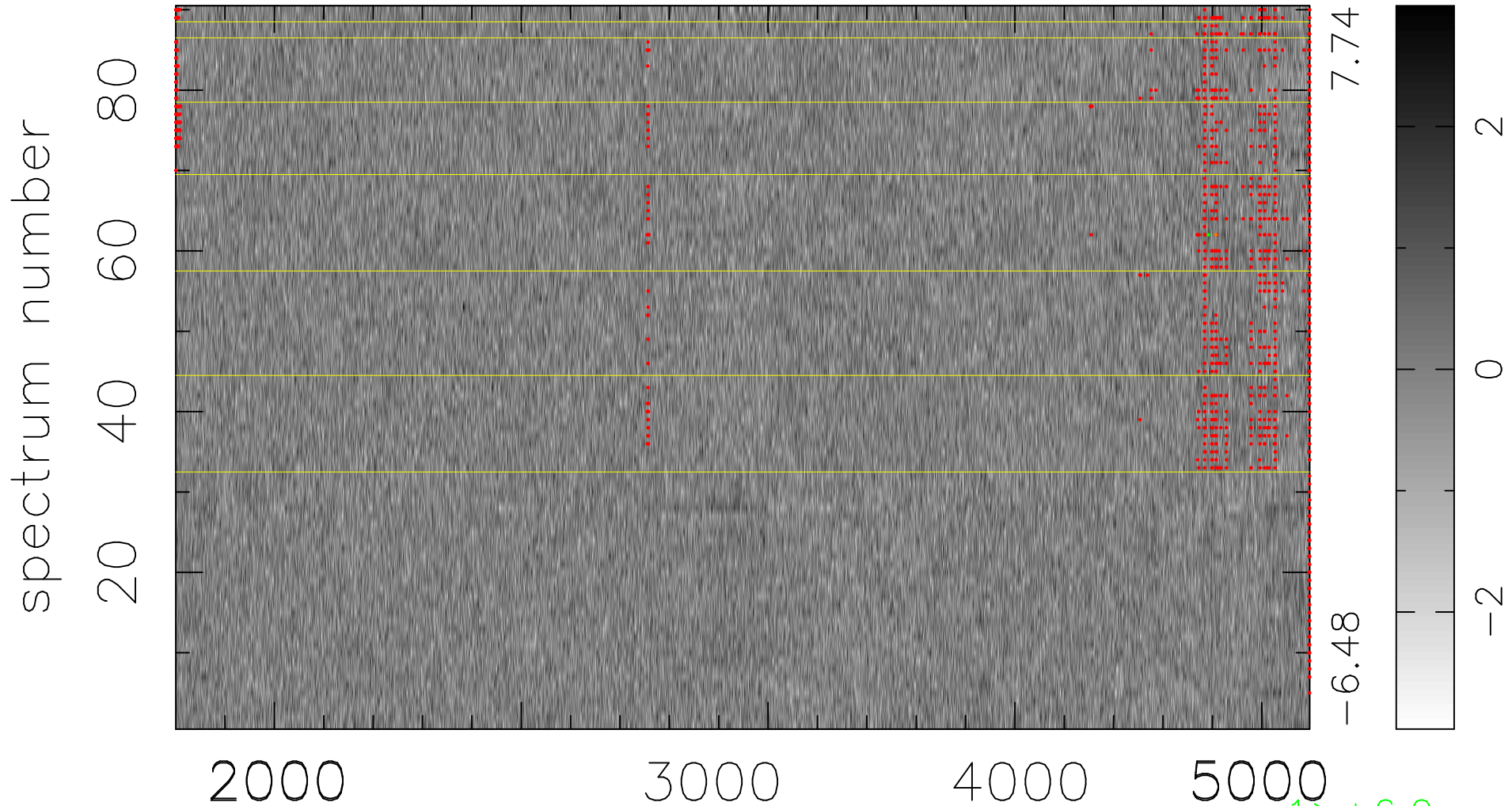


$$\chi(\lambda, t) = ( \text{Data} - \text{Model } \text{AC}_5\text{B}_4\text{F} ) / \sigma \chi$$

$$\chi^2 / (413460 - 5220) = 0.948 \Rightarrow 1.007$$

4594x90



bad:1169=0.28%  $\lambda$  (Å)  $z = 0.97300$

$1 > +6.0\sigma$

$1 < -6.0\sigma$