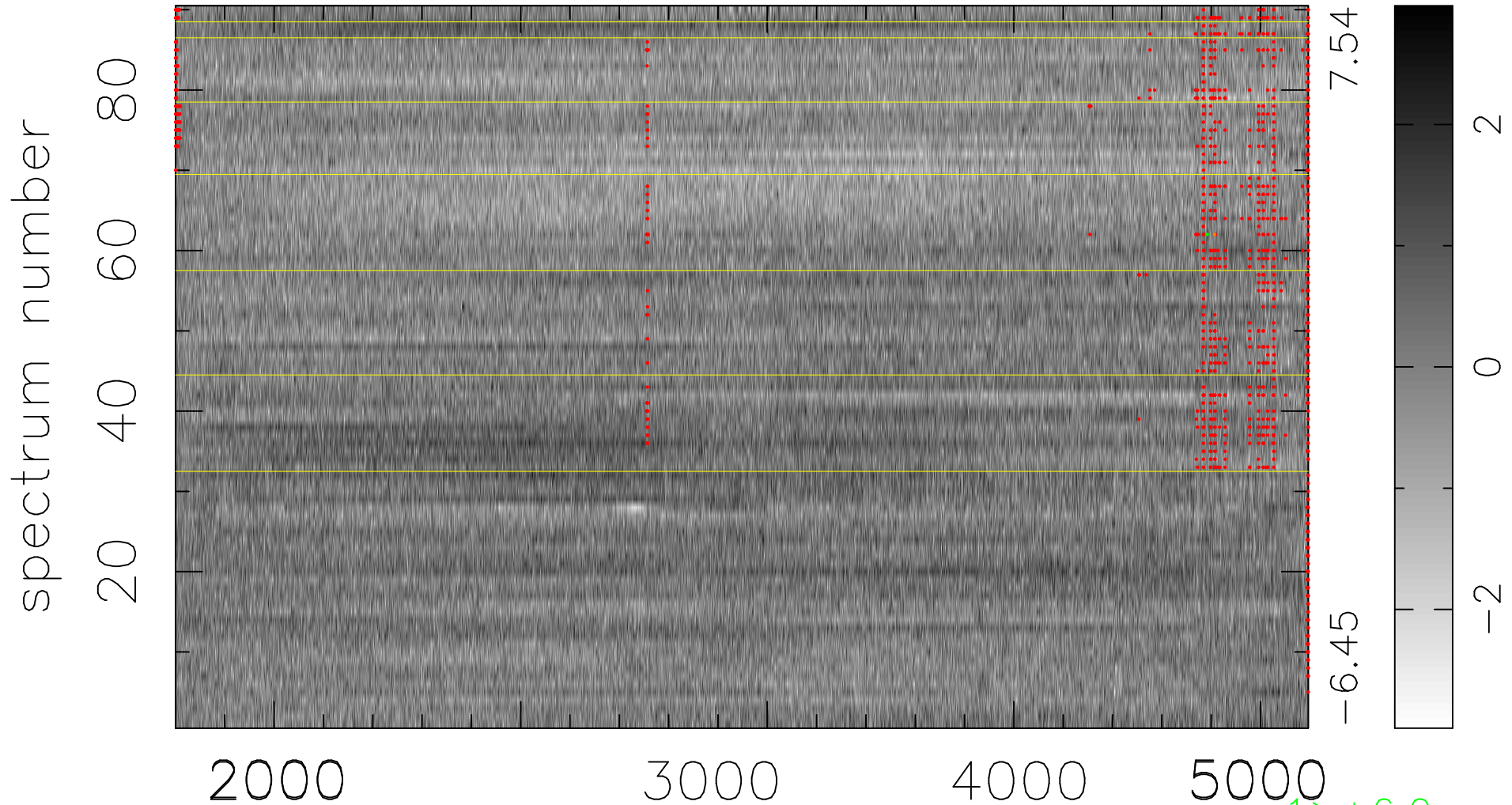


$$\chi(\lambda, t) = (\text{Data} - \text{Model A}) / \sigma \chi$$

$$\chi^2 / (413460 - 4971) = 1.086 \Rightarrow 1.006$$

4594x90



bad:1169=0.28% λ (Å) $z = 0.97300$

$1 > +6.0\sigma$
 $1 < -6.0\sigma$