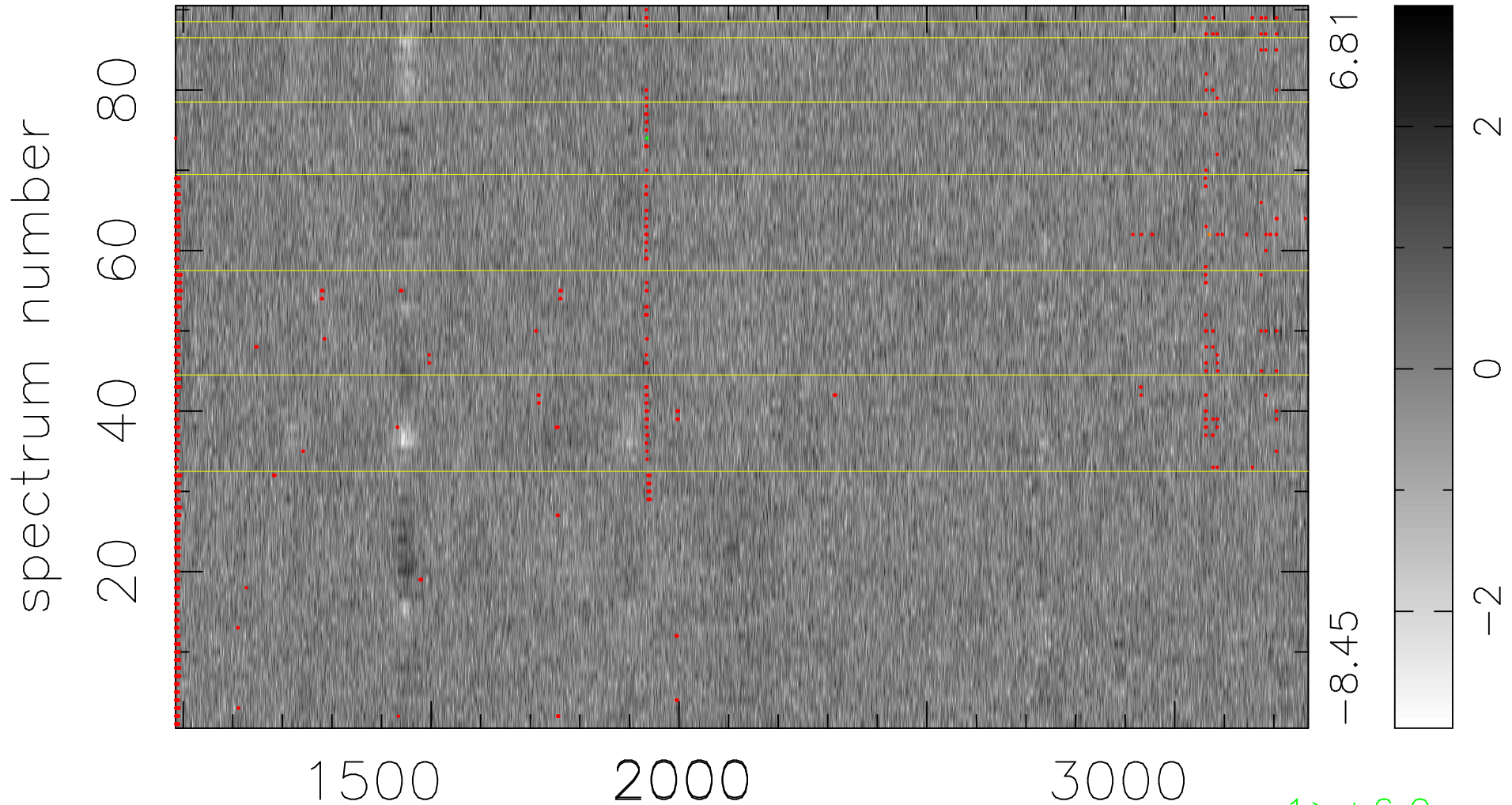


$$\chi(\lambda, t) = ( \text{Data} - \text{Model AC}_5\text{F} ) / \sigma \chi$$

$$\chi^2 / (411300 - 5148) = 1.048 \Rightarrow 1.007$$

4570x90



bad:1322=0.32%  $\lambda$  (Å)  $z = 1.88108$

1 > +6.0 $\sigma$

1 < -6.0 $\sigma$