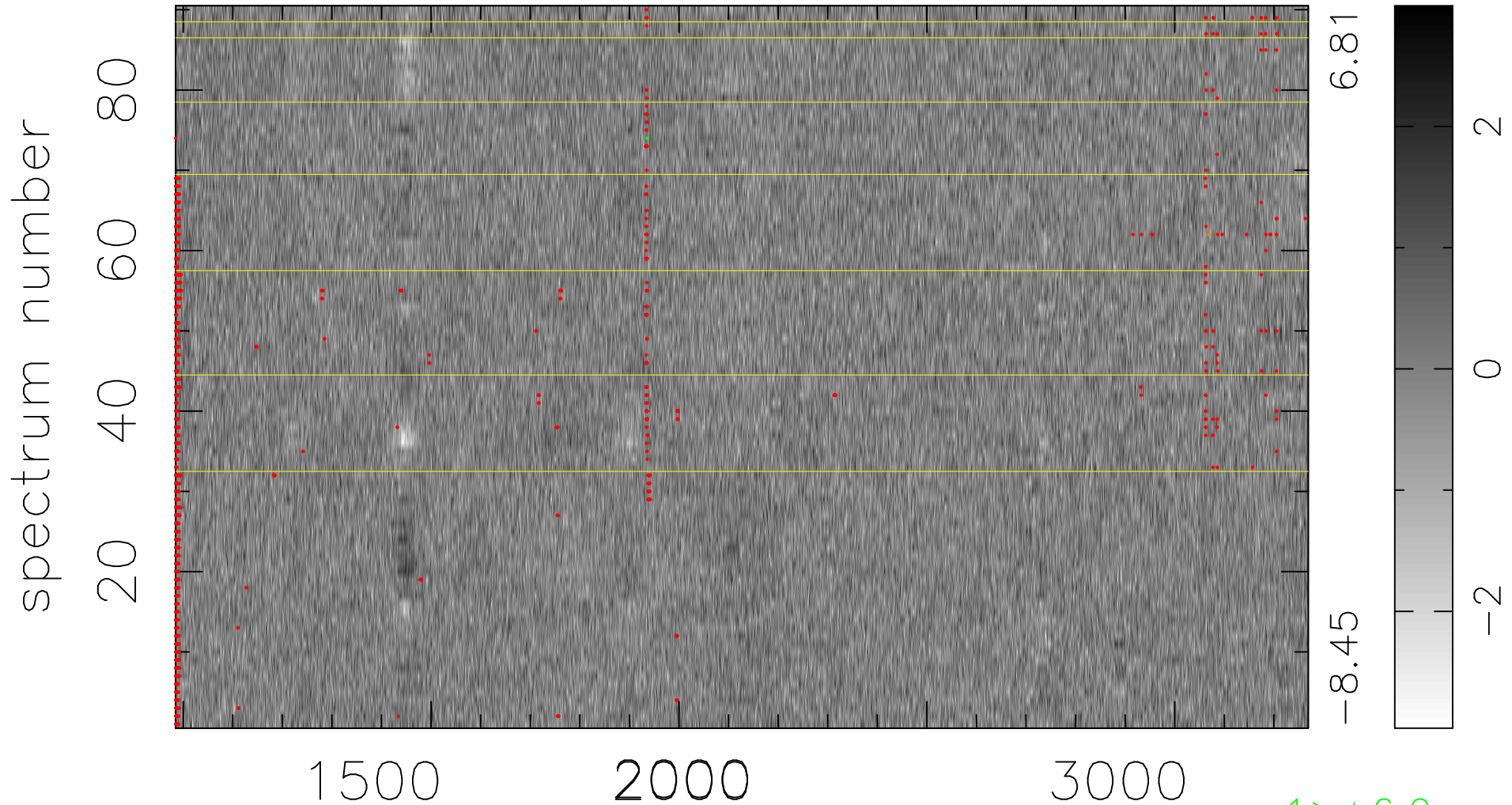


$$\chi(\lambda,t) = (\text{Data} - \text{Model } AC_5) / \sigma \chi$$

$$\chi^2 / (411300 - 5058) = 1.048 \Rightarrow 1.007$$

4570x90



bad:1322=0.32% λ (Å) $z = 1.88108$

1 > +6.0 σ

1 < -6.0 σ