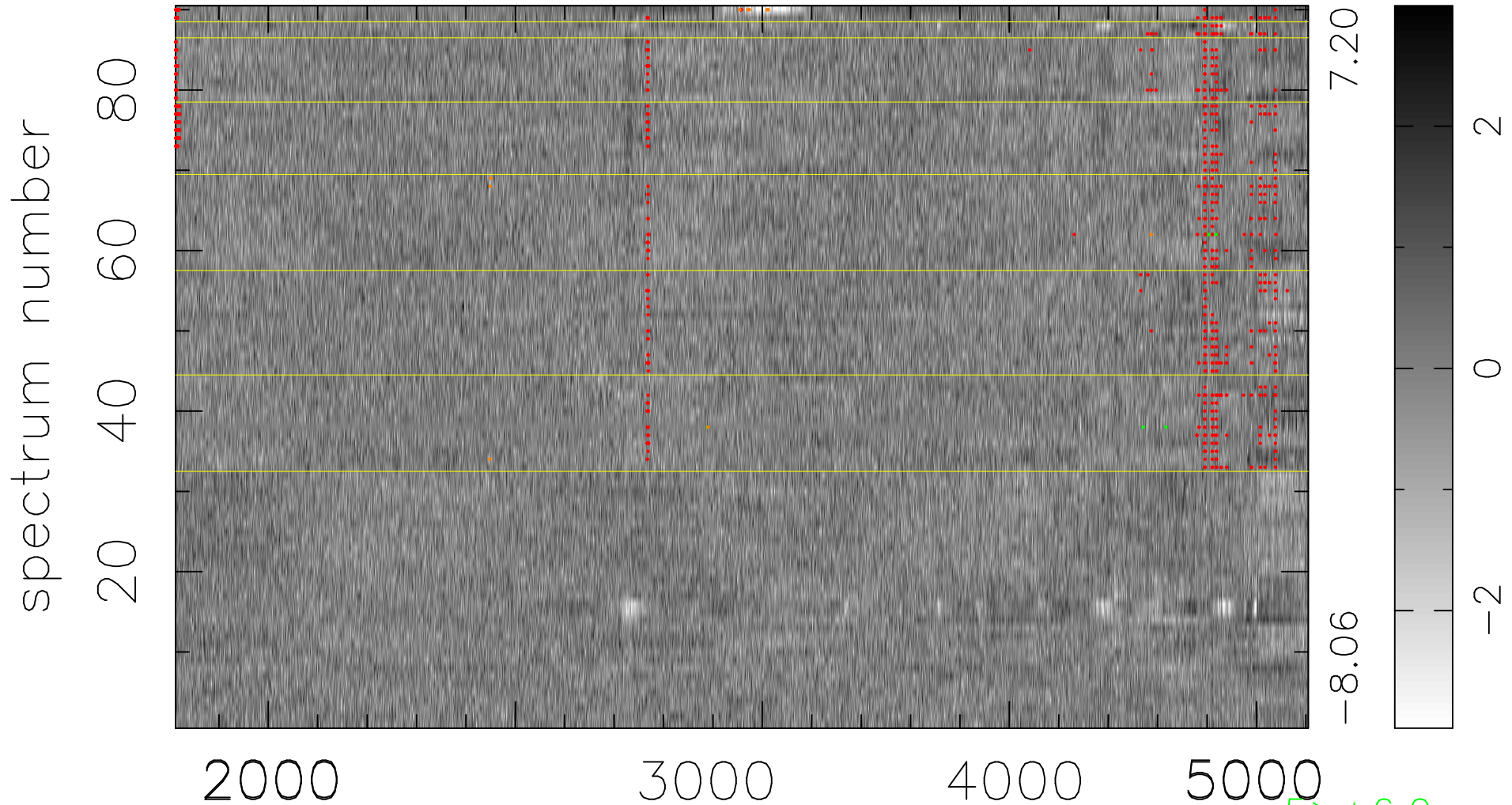


$$\chi(\lambda, t) = (\text{Data} - \text{Model } AC_5) / \sigma \chi$$

$$\chi^2 / (412740 - 4968) = 1.219 \Rightarrow 1.007$$

4586x90



bad:769=0.19%

λ (Å) $z = 0.96254$

5 > +6.0σ
10 < -6.0σ