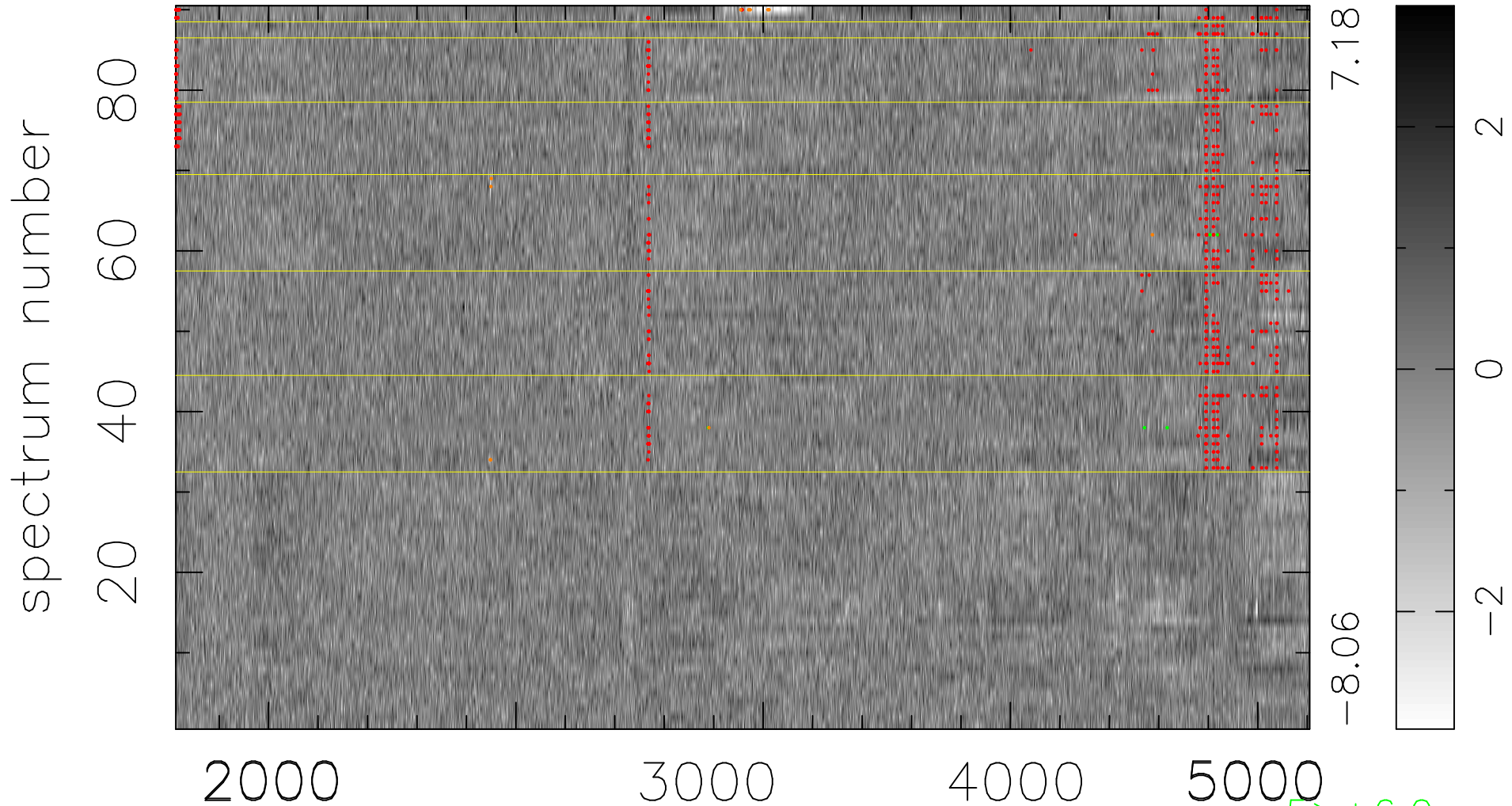


$$\chi(\lambda, t) = (\text{Data} - \text{Model } \text{AC}_5\text{B}_4\text{F}) / \sigma \chi$$

$$\chi^2 / (412740 - 5196) = 1.204 \Rightarrow 1.008$$

4586x90



bad:769=0.19%

λ (Å) $z = 0.96254$

5 > +6.0σ
11 < -6.0σ