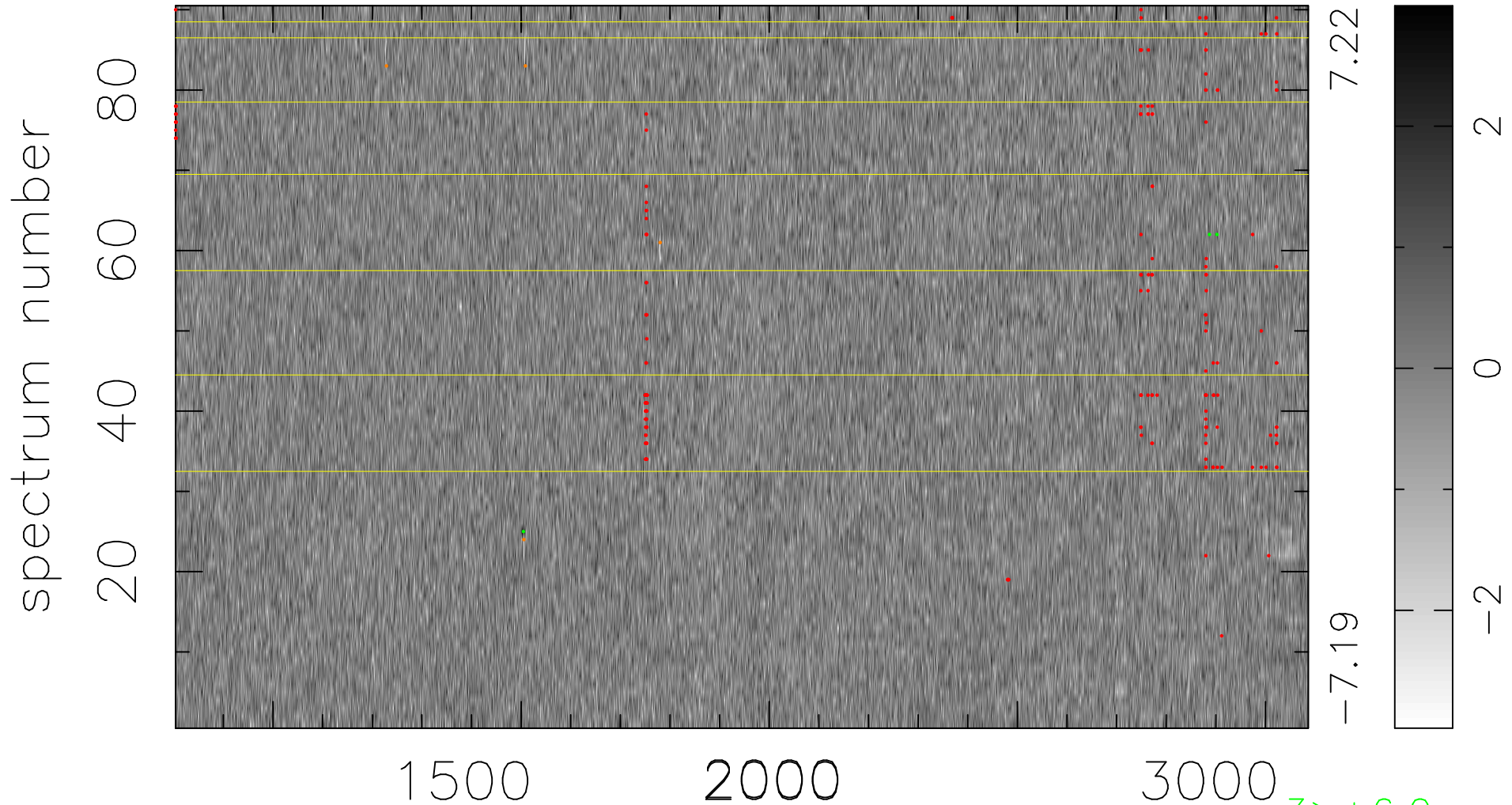


$$\chi(\lambda, t) = (\text{Data} - \text{Model } \text{AC}_5\text{B}_7\text{F}) / \sigma \chi$$

$$\chi^2 / (410940 - 5530) = 0.931 \Rightarrow 1.008$$

4566x90



bad:201=0.049% λ (Å) $z = 2.13372$

3 > +6.0 σ

4 < -6.0 σ