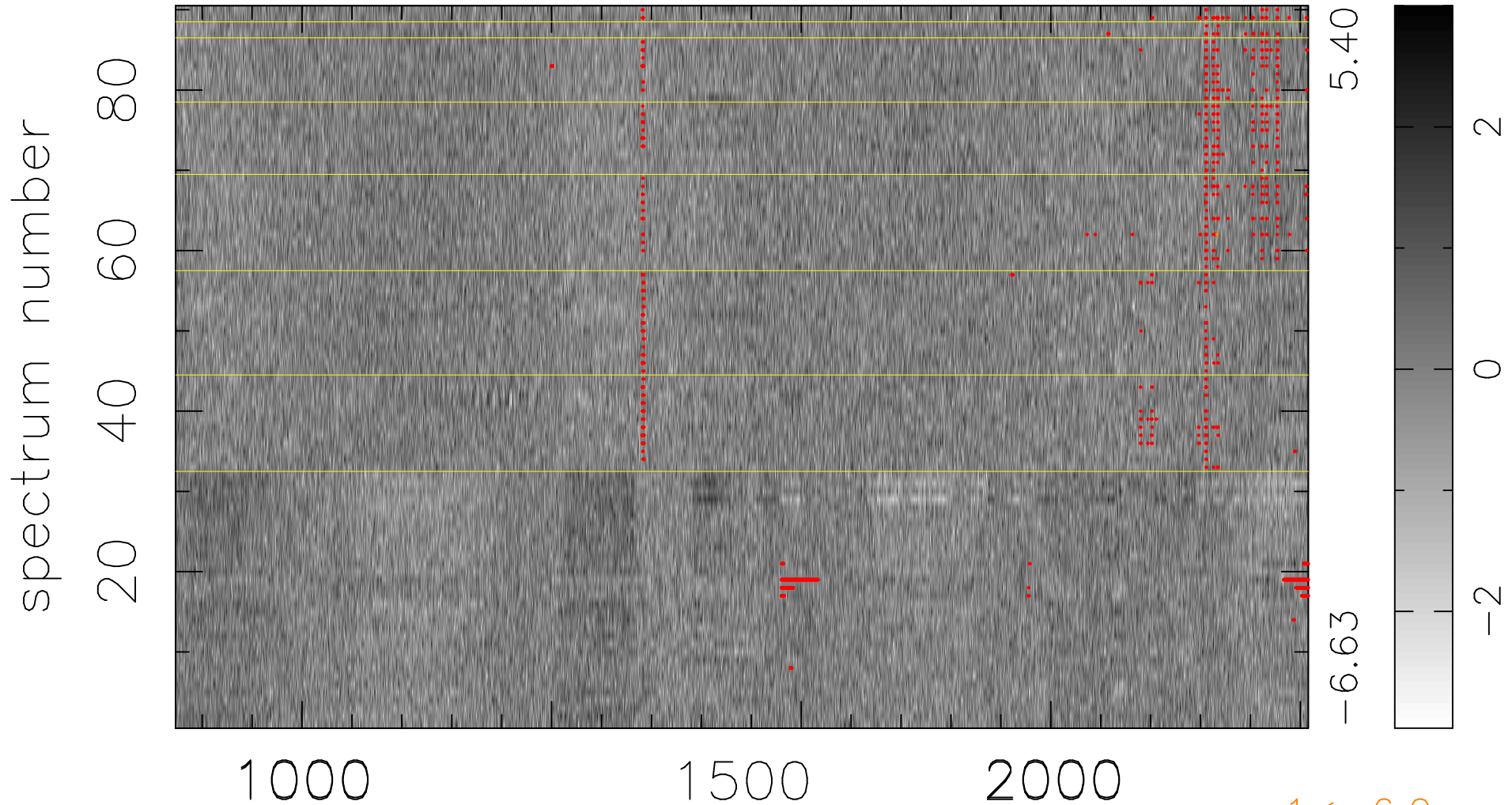


$$\chi(\lambda, t) = (\text{Data} - \text{Model } \text{AC}_5\text{B}_6\text{F}) / \sigma \chi$$

$$\chi^2 / (408510 - 5340) = 1.026 \Rightarrow 1.008$$

4539x90



1 < -6.0σ

bad:1164=0.28% λ (Å) z = 3.07225