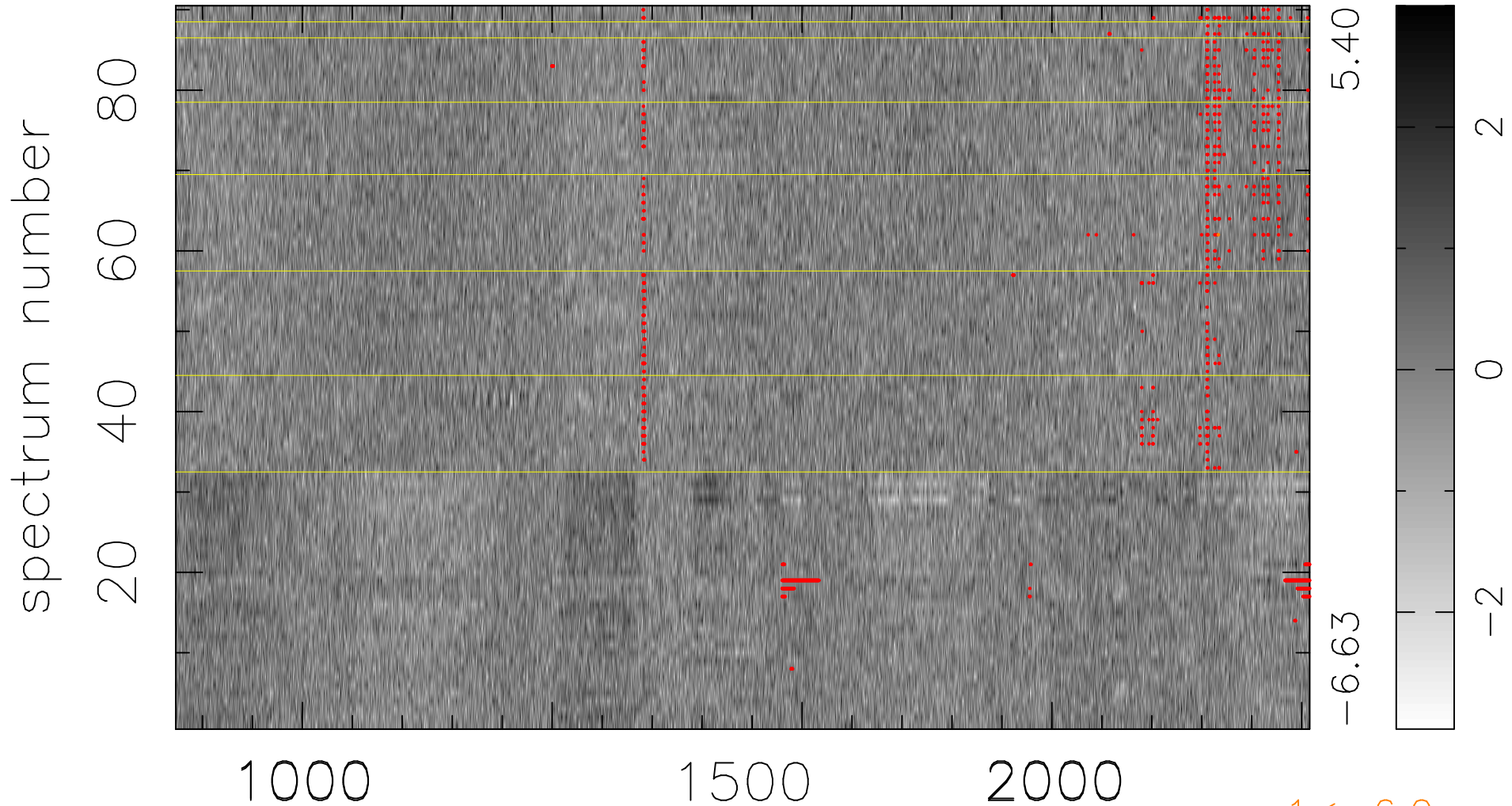


$$\chi(\lambda, t) = ( \text{Data} - \text{Model } \text{AC}_5\text{B}_6\text{F} ) / \sigma \chi$$

$$\chi^2 / (408510 - 5340) = 1.026 \Rightarrow 1.008$$

4539 × 90



bad:1164=0.28%  $\lambda$  (Å)  $z = 3.07225$