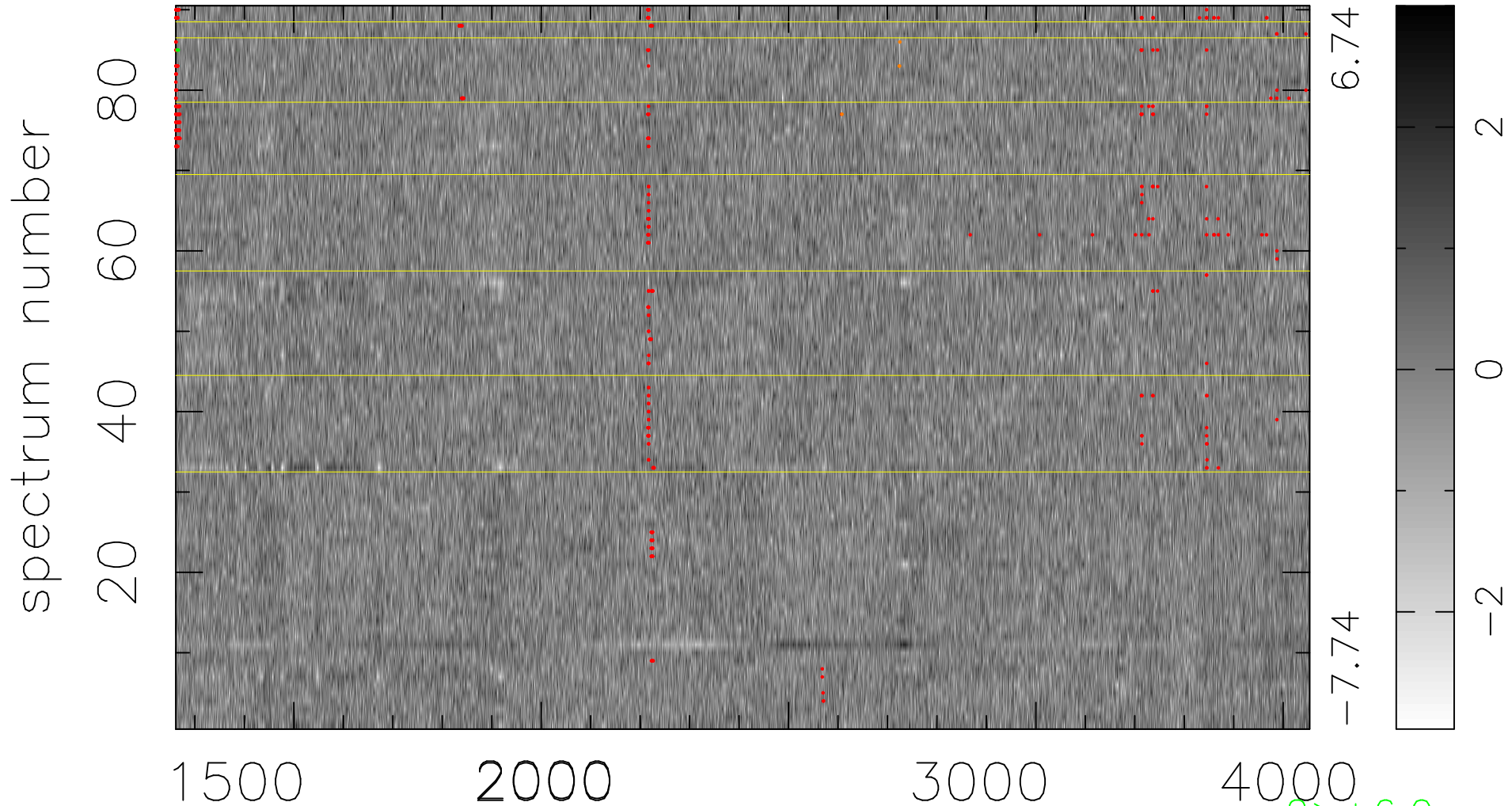


$$\chi(\lambda, t) = (\text{Data} - \text{Model AC}_5\text{F}) / \sigma \chi$$

$$\chi^2 / (412650 - 5063) = 0.932 \Rightarrow 1.007$$

4585x90



bad:425=0.10%

λ (Å) $z = 1.53001$

2 > +6.0 σ

4 < -6.0 σ