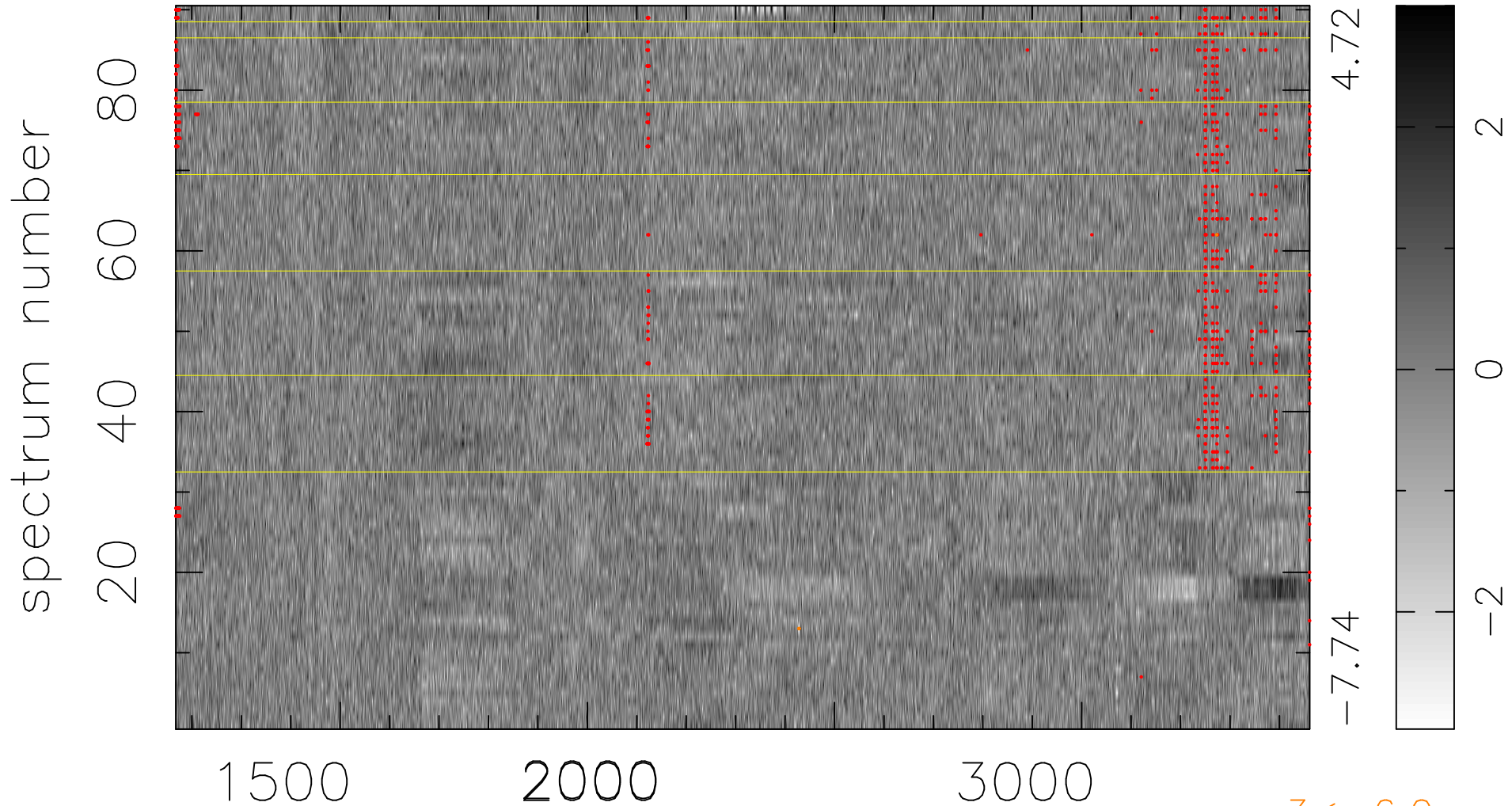


$$\chi(\lambda, t) = (\text{Data} - \text{Model } \text{AC}_5\text{B}_5\text{F}) / \sigma \chi$$

$$\chi^2 / (412920 - 5341) = 1.055 \Rightarrow 1.008$$

4588x90



bad:799=0.19%

λ (Å) $z = 1.64176$