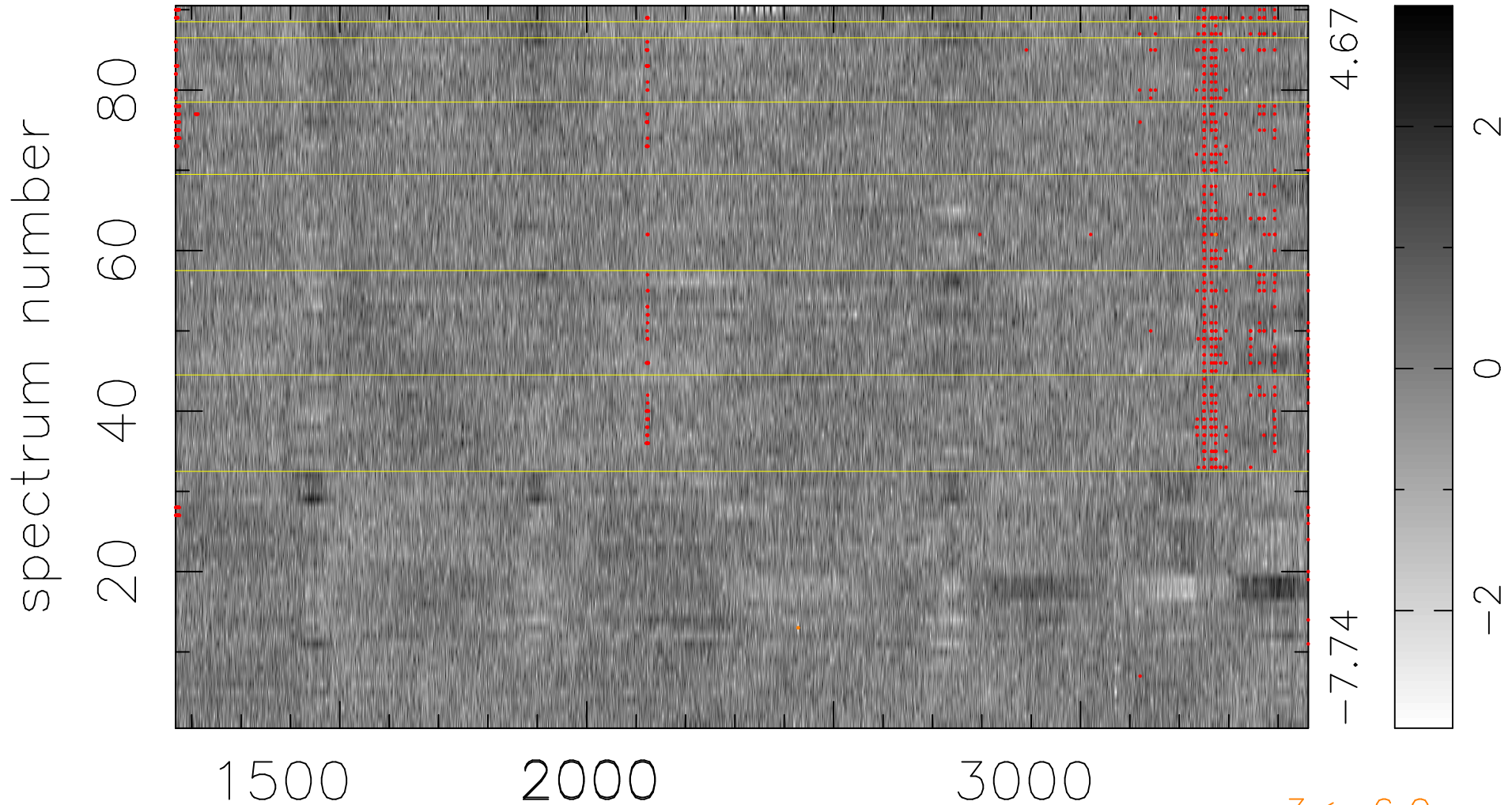


$$\chi(\lambda, t) = ( \text{Data} - \text{Model AC}_5\text{F} ) / \sigma \chi$$

$$\chi^2 / (412920 - 5156) = 1.071 \Rightarrow 1.008$$

4588x90



bad:799=0.19%

$\lambda$  (Å)  $z = 1.64176$

$3 < -6.0\sigma$