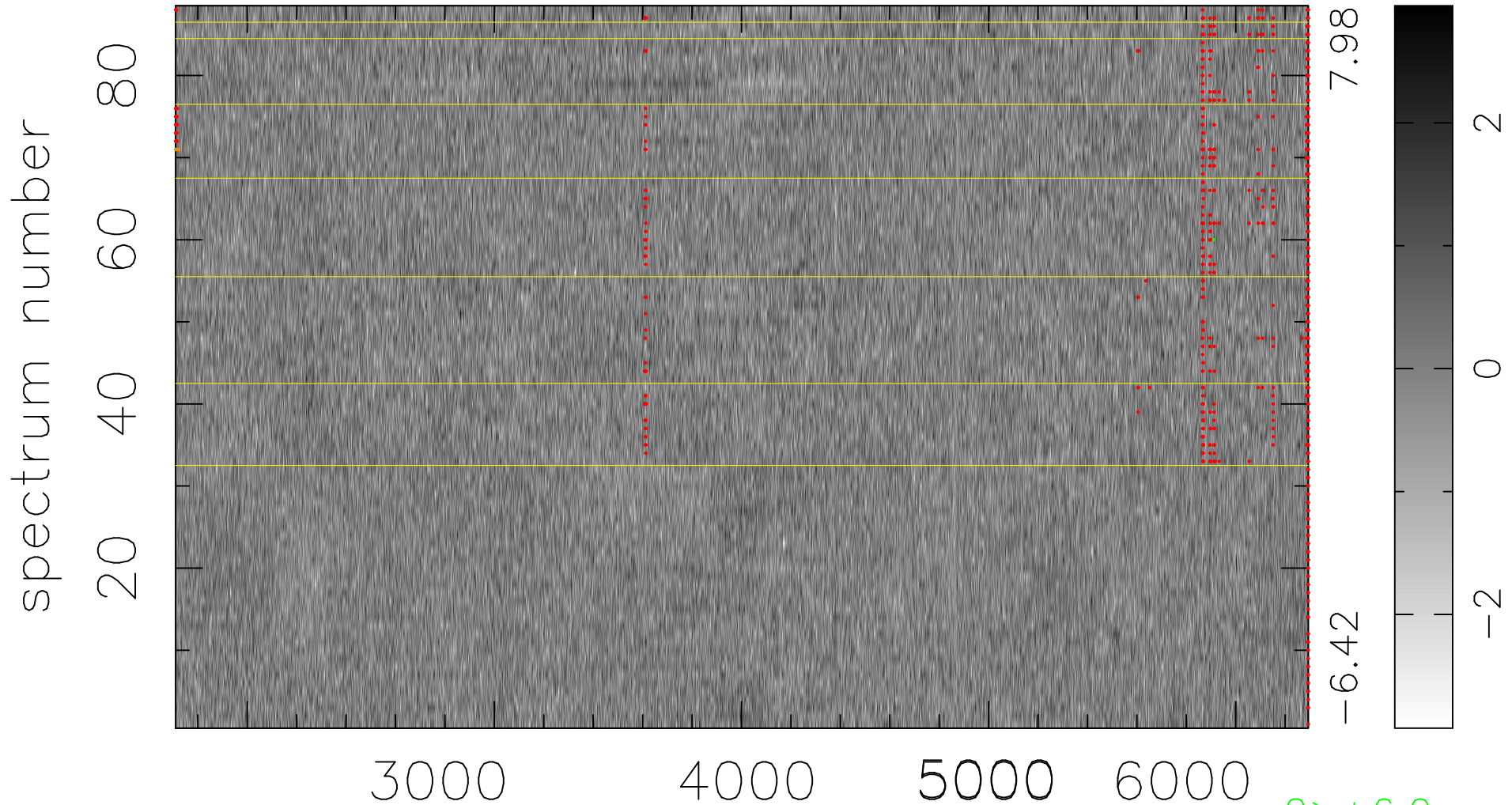


$$\chi(\lambda, t) = (\text{Data} - \text{Model } \text{AC}_5\text{B}_4\text{F}) / \sigma \chi$$

$$\chi^2 / (403392 - 5222) = 0.907 \Rightarrow 0.993$$

4584x88



7.98

-6.42

bad:771=0.19%

λ (Å) $z = 0.53238$

2 > +6.0σ
3 < -6.0σ