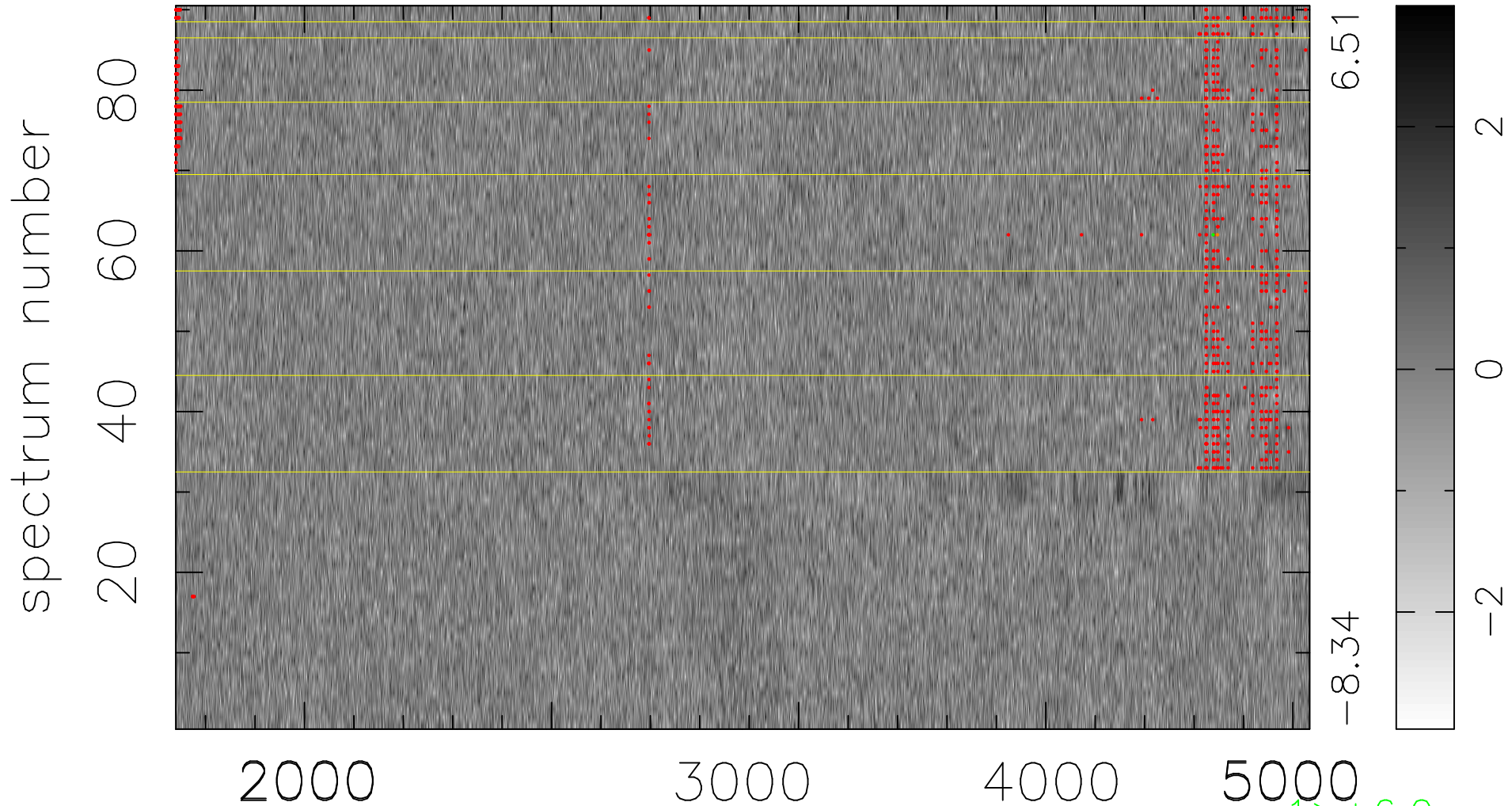


$$\chi(\lambda,t) = (\text{Data} - \text{Model } AC_5) / \sigma \chi$$

$$\chi^2 / (413010 - 4960) = 0.924 \Rightarrow 1.007$$

4589x90



bad:840=0.20%

λ (Å) $z = 1.02786$

$1 > +6.0\sigma$

$1 < -6.0\sigma$