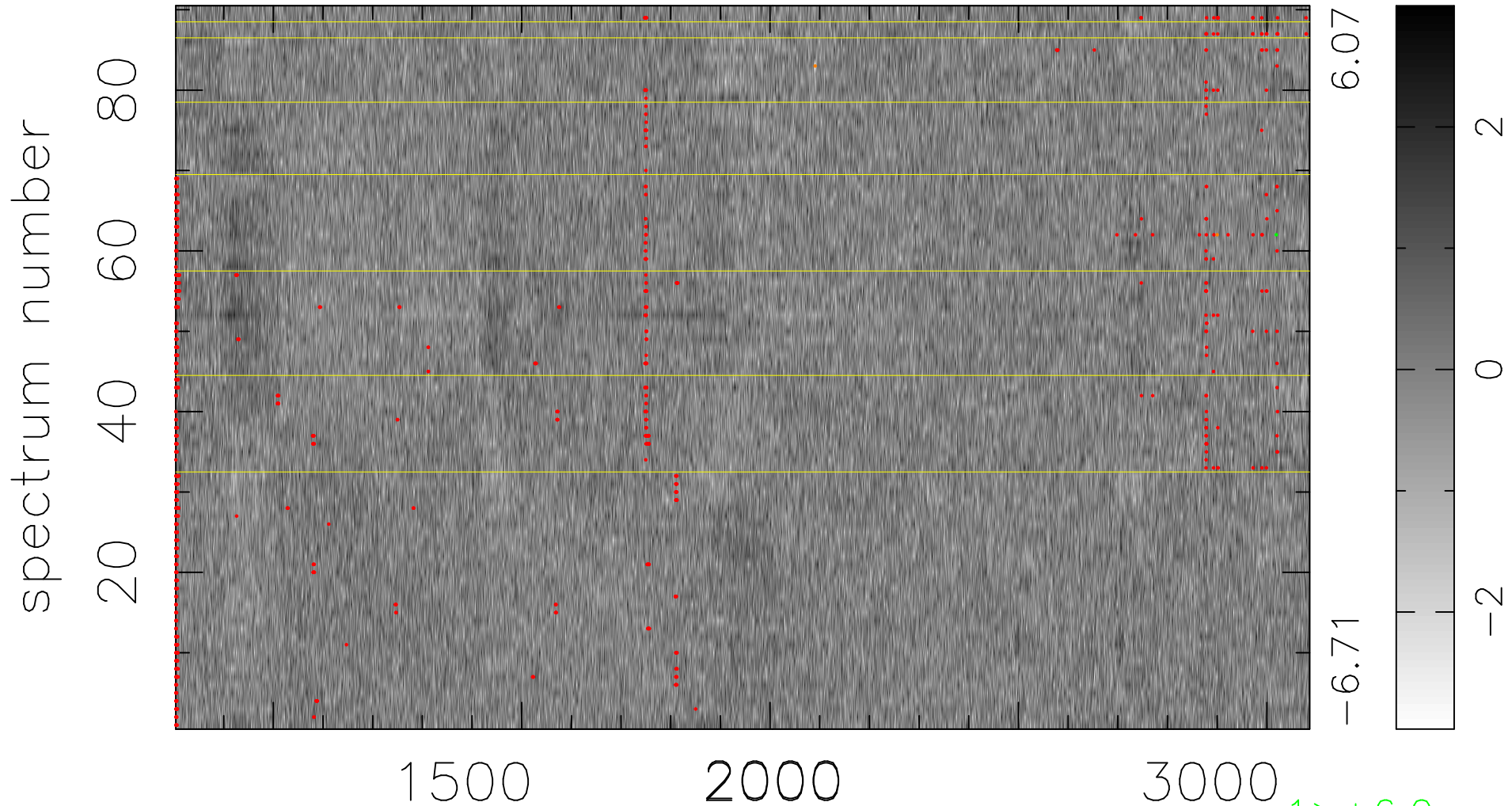


$$\chi(\lambda, t) = (\text{Data} - \text{Model } AC_5) / \sigma \chi$$

$$\chi^2 / (410940 - 5239) = 1.034 \Rightarrow 1.008$$

4566x90



bad:926=0.23%

λ (Å) $z = 2.13666$

1 > +6.0σ

2 < -6.0σ