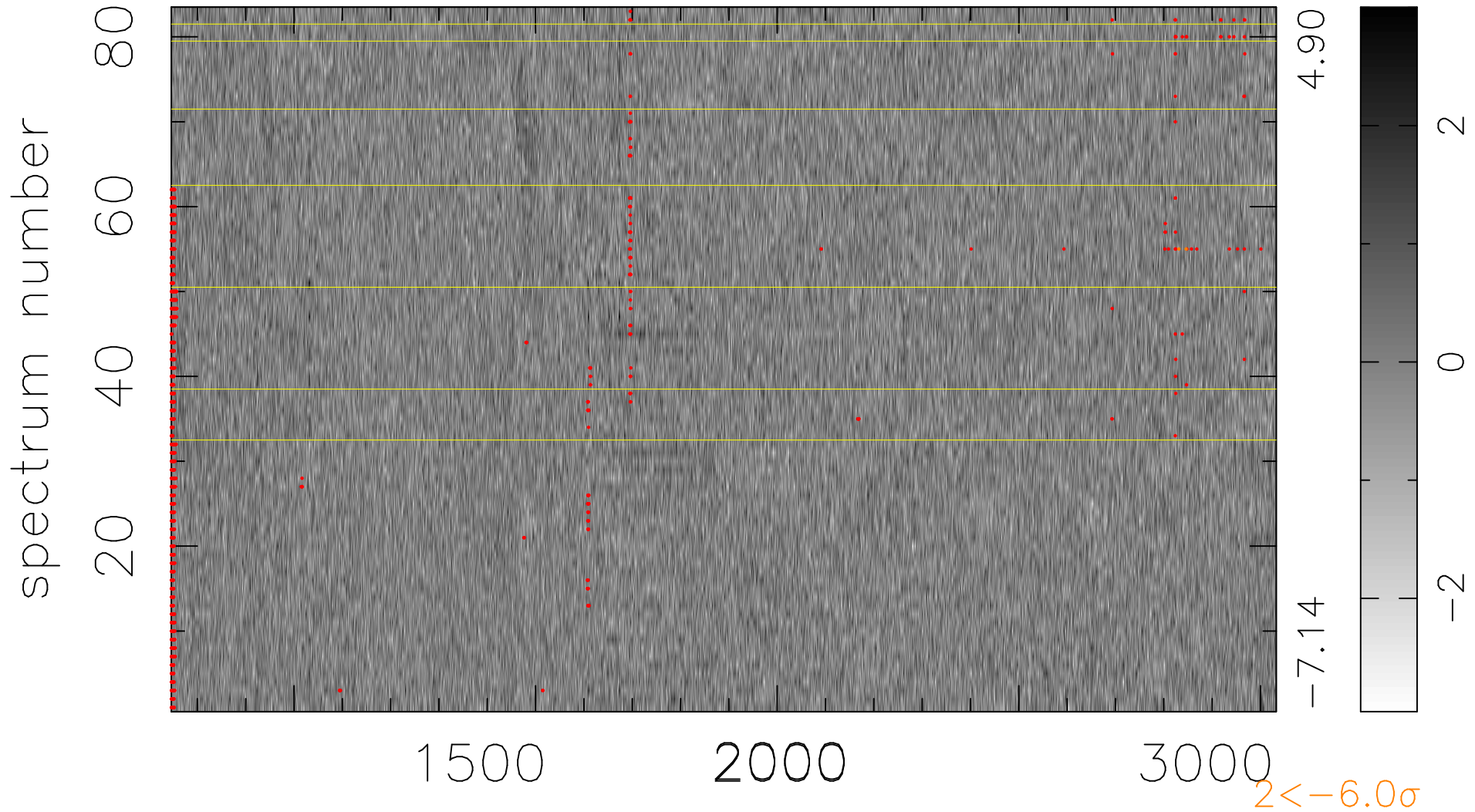


$$\chi(\lambda, t) = ( \text{Data} - \text{Model } \text{AC}_5\text{B}_7\text{F} ) / \sigma \chi$$

$$\chi^2 / (379642 - 5467) = 0.973 \Rightarrow 1.009$$

4574x83



bad:1106=0.29%  $\lambda$  (Å)  $z = 2.21565$