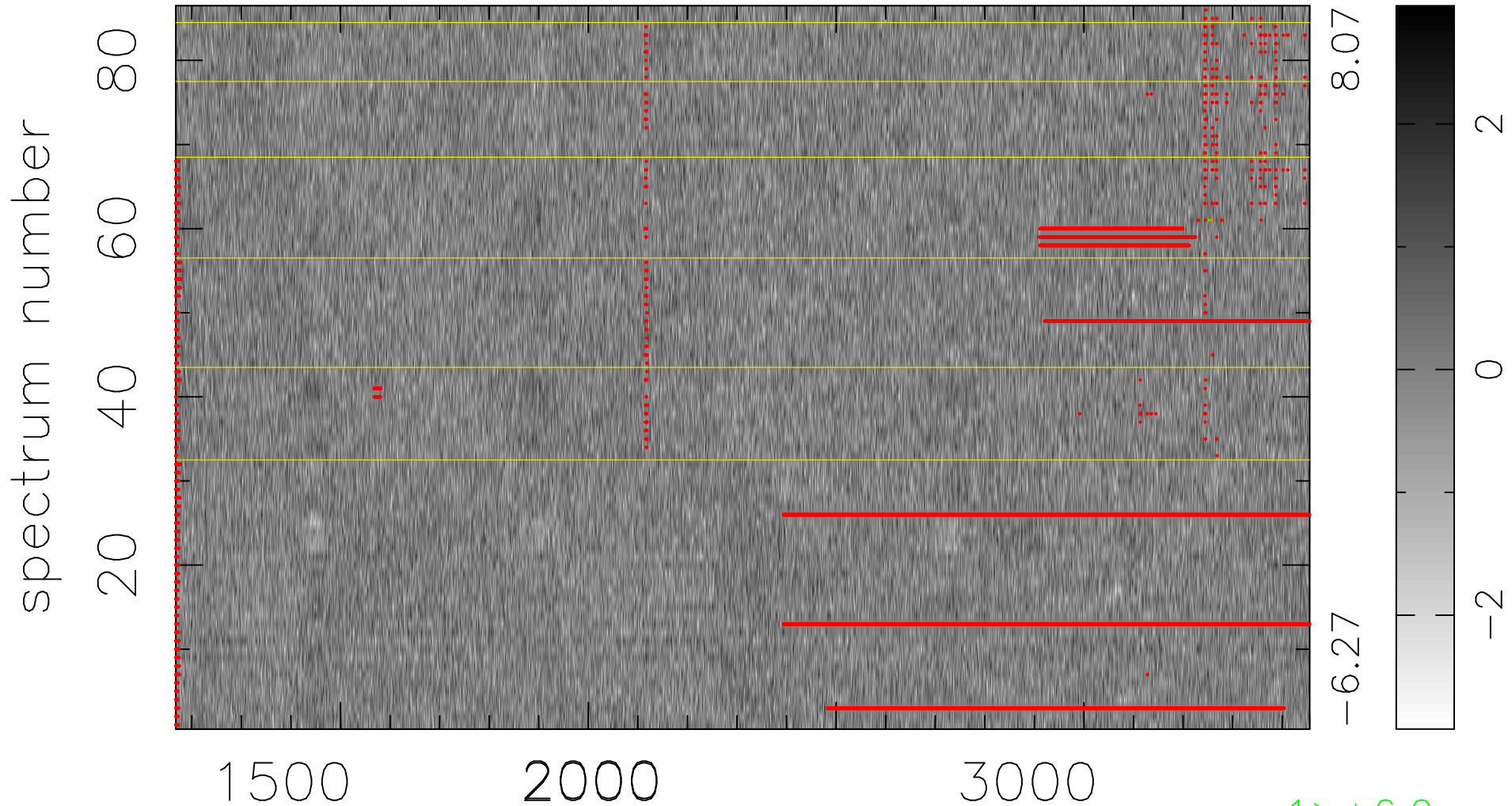


$$\chi(\lambda, t) = ( \text{Data} - \text{Model AC}_5\text{F} ) / \sigma \chi$$

$$\chi^2 / (393536 - 5121) = 0.984 \Rightarrow 1.008$$

4576 × 86



bad:10220=2.6%  $\lambda$  (Å)  $z = 1.64931$

1 > +6.0σ

1 < -6.0σ