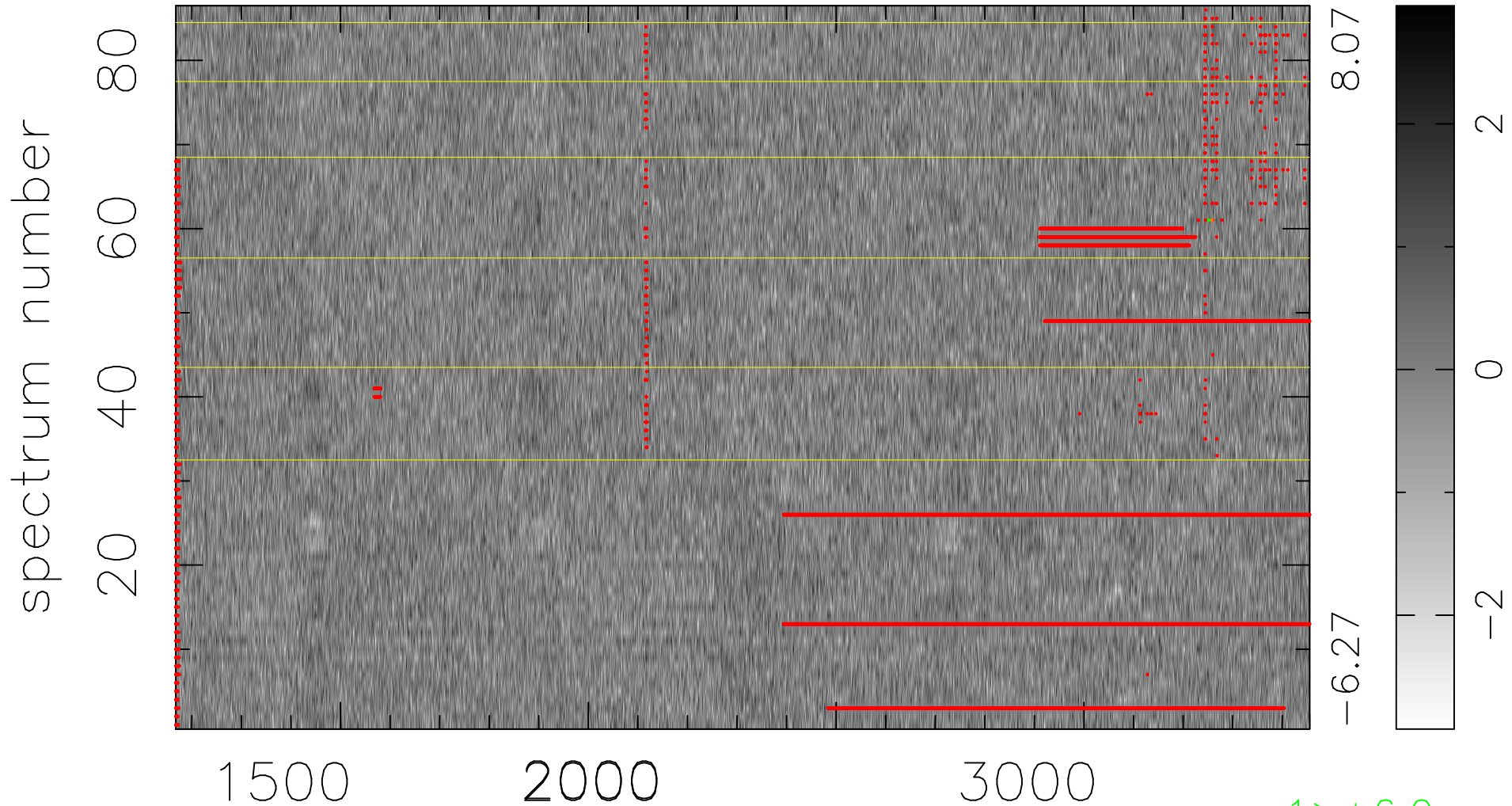


$$\chi(\lambda, t) = (\text{Data} - \text{Model } AC_5) / \sigma \chi$$

$$\chi^2 / (393536 - 5035) = 0.984 \Rightarrow 1.007$$

4576 × 86



bad:10220=2.6% λ (Å) $z = 1.64931$

1 > +6.0σ

1 < -6.0σ