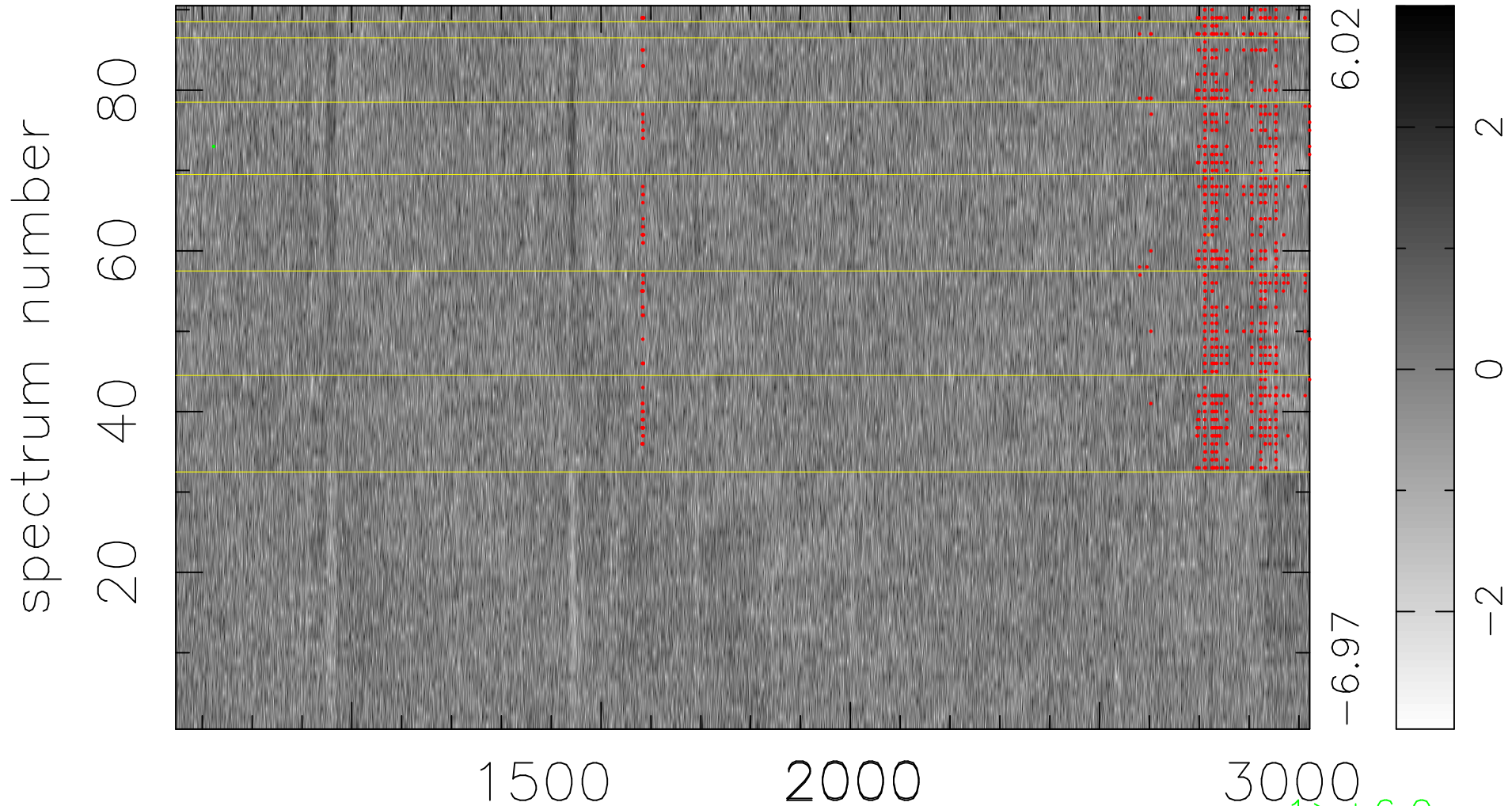


$$\chi(\lambda,t) = (\text{Data} - \text{Model } AC_5) / \sigma \chi$$

$$\chi^2 / (409500 - 5206) = 0.989 \Rightarrow 1.009$$

4550x90



bad:791=0.19%

λ (Å) $z = 2.38624$

$1 > +6.0\sigma$

$1 < -6.0\sigma$