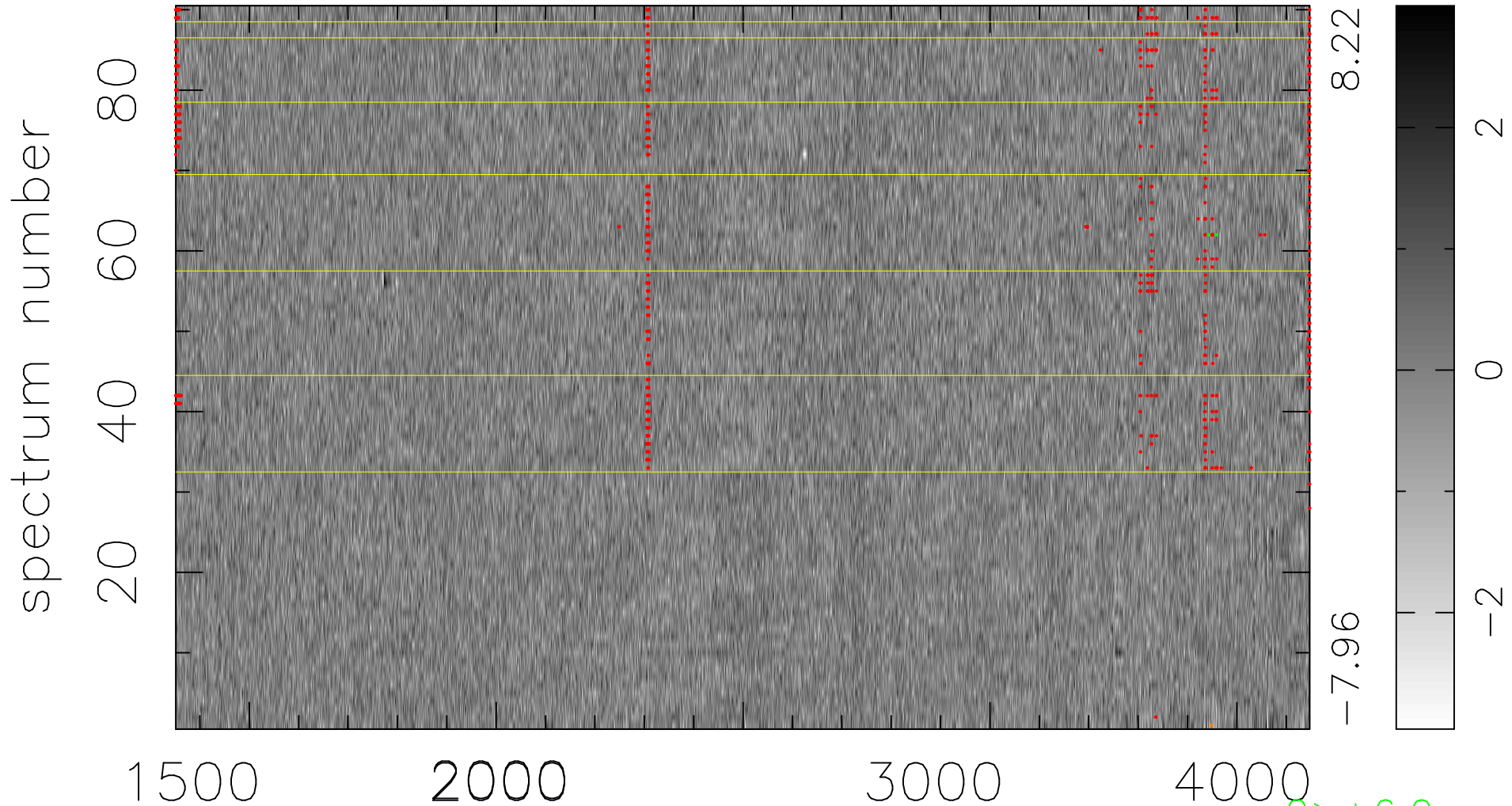


$$\chi(\lambda, t) = ( \text{Data} - \text{Model } \text{AC}_5\text{B}_4\text{F} ) / \sigma \chi$$

$$\chi^2 / (413370 - 5244) = 1.023 \Rightarrow 1.008$$

4593x90



bad:962=0.23%

$\lambda$  (Å)  $z = 1.42631$

2 > +6.0σ

1 < -6.0σ