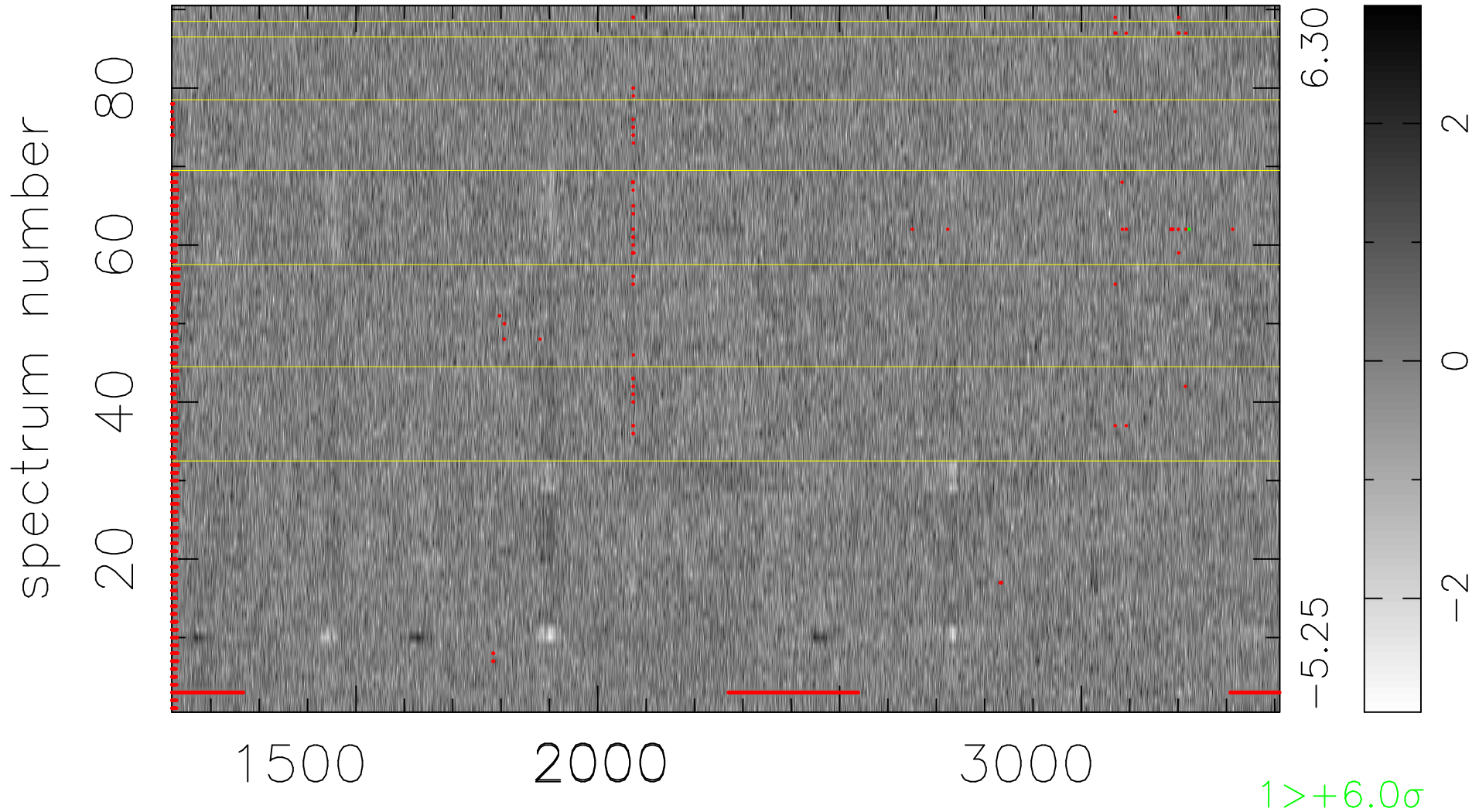


$$\chi(\lambda, t) = ( \text{Data} - \text{Model AC}_5\text{F} ) / \sigma \chi$$

$$\chi^2 / (412470 - 5162) = 0.941 \Rightarrow 1.007$$

4583x90



bad:2654=0.64%  $\lambda$  ( $\text{\AA}$ )  $z = 1.70324$