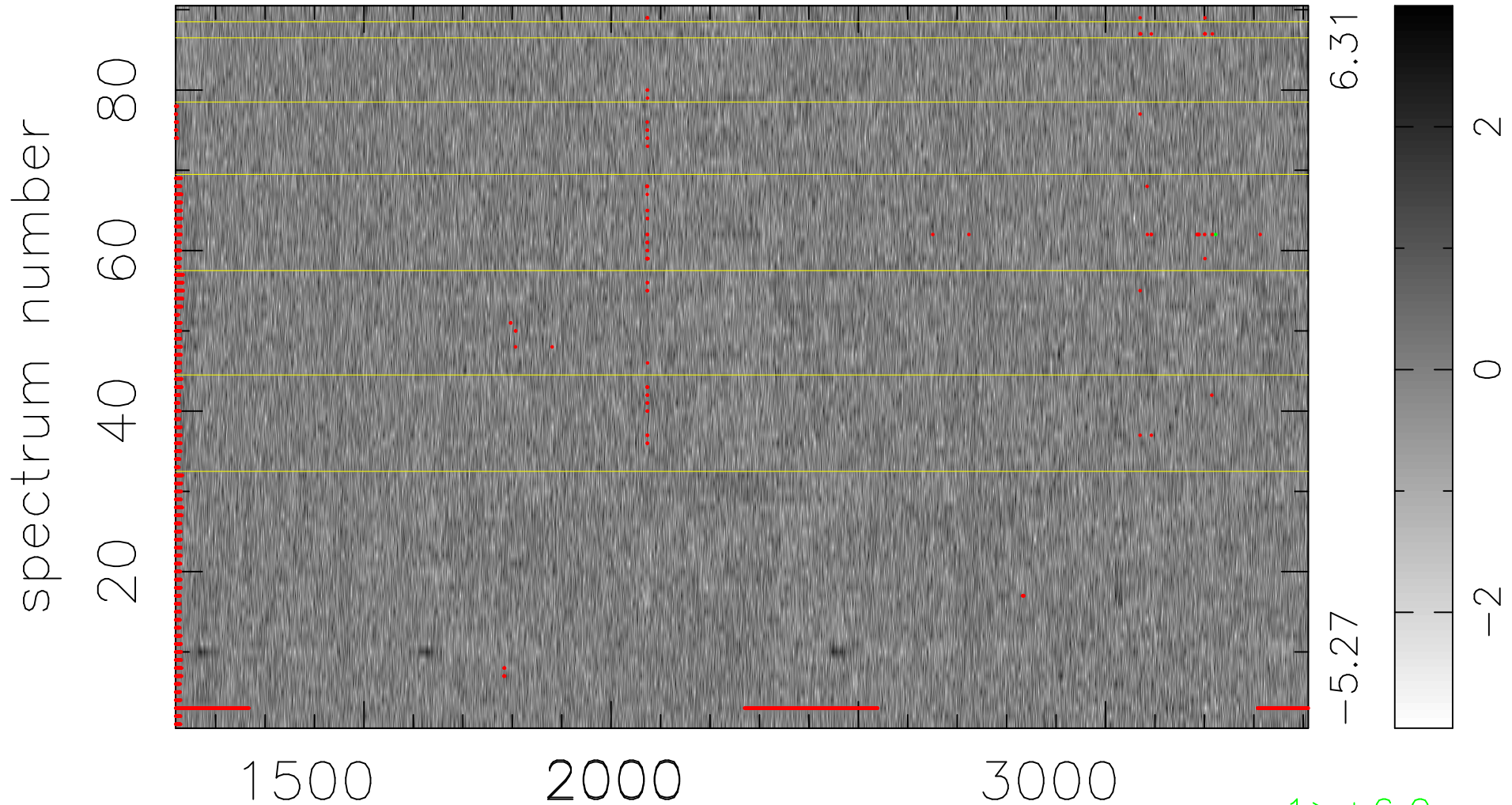


$$\chi(\lambda, t) = (\text{Data} - \text{Model } \text{AC}_5\text{B}_5\text{F}) / \sigma \chi$$

$$\chi^2 / (412470 - 5315) = 0.933 \Rightarrow 1.008$$

4583x90



bad:2654=0.64% λ (Å) $z = 1.70324$

1 > +6.0 σ