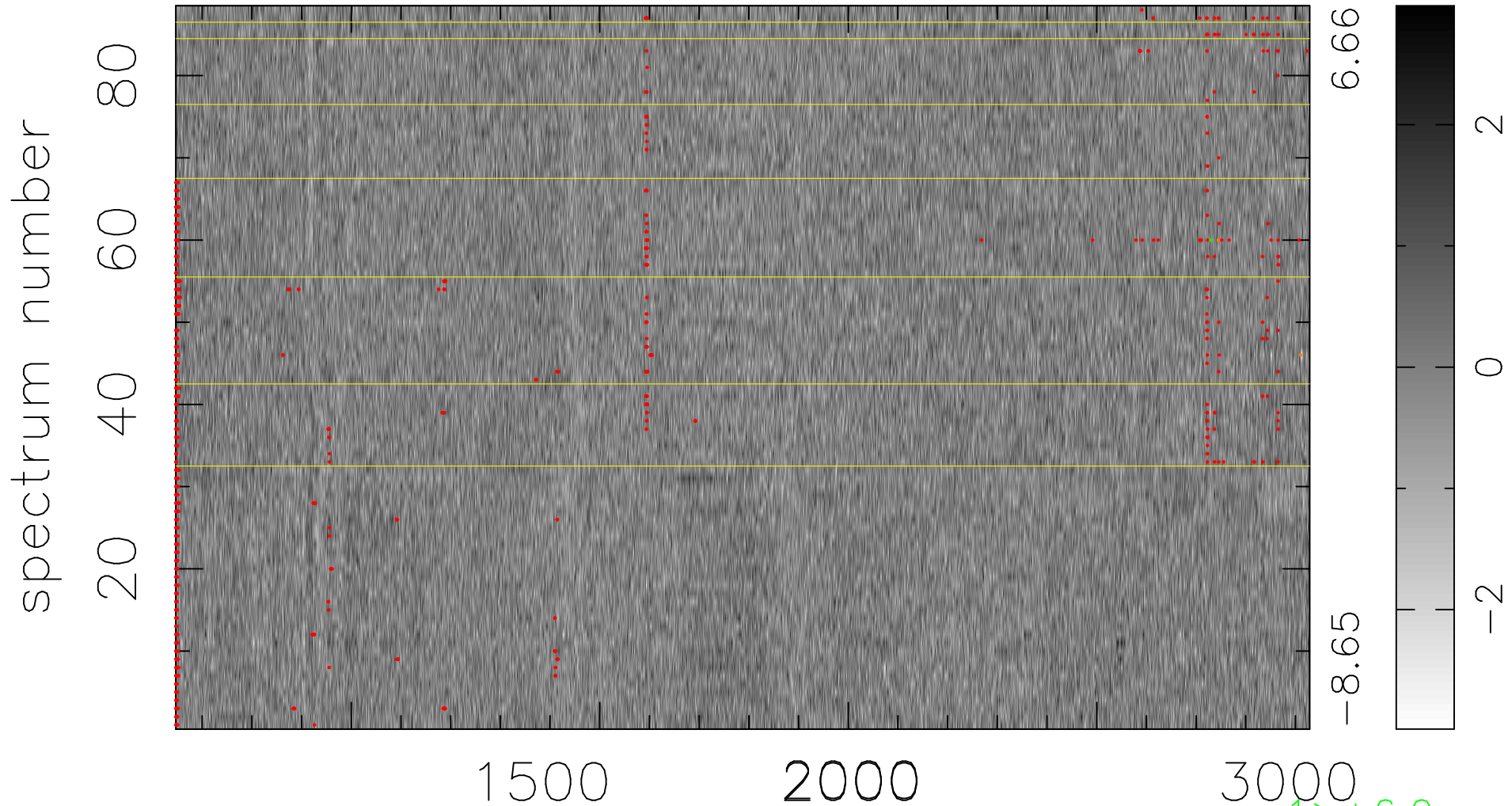


$$\chi(\lambda, t) = (\text{Data} - \text{Model } \text{AC}_5\text{B}_7\text{F}) / \sigma \chi$$

$$\chi^2 / (401632 - 5489) = 1.028 \Rightarrow 1.009$$

4564x88



bad:987=0.25%

λ (Å) $z = 2.36988$

1 > +6.0σ

2 < -6.0σ