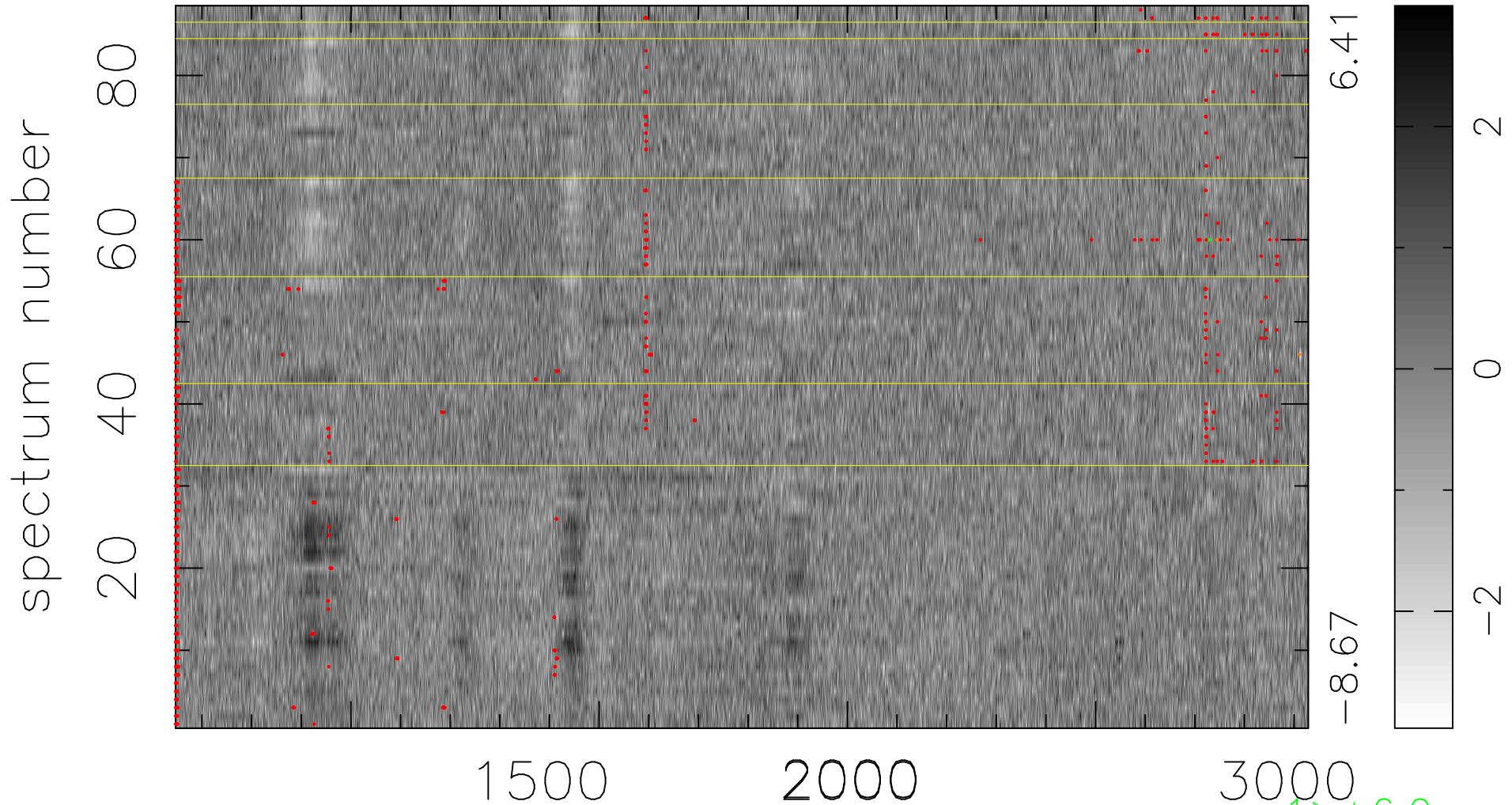


$$\chi(\lambda, t) = (\text{Data} - \text{Model AC}_5\text{F}) / \sigma \chi$$

$$\chi^2 / (401632 - 5307) = 1.081 \Rightarrow 1.008$$

4564 × 88



1 > +6.0σ

2 < -6.0σ

bad:987=0.25%

λ (Å) z = 2.36988