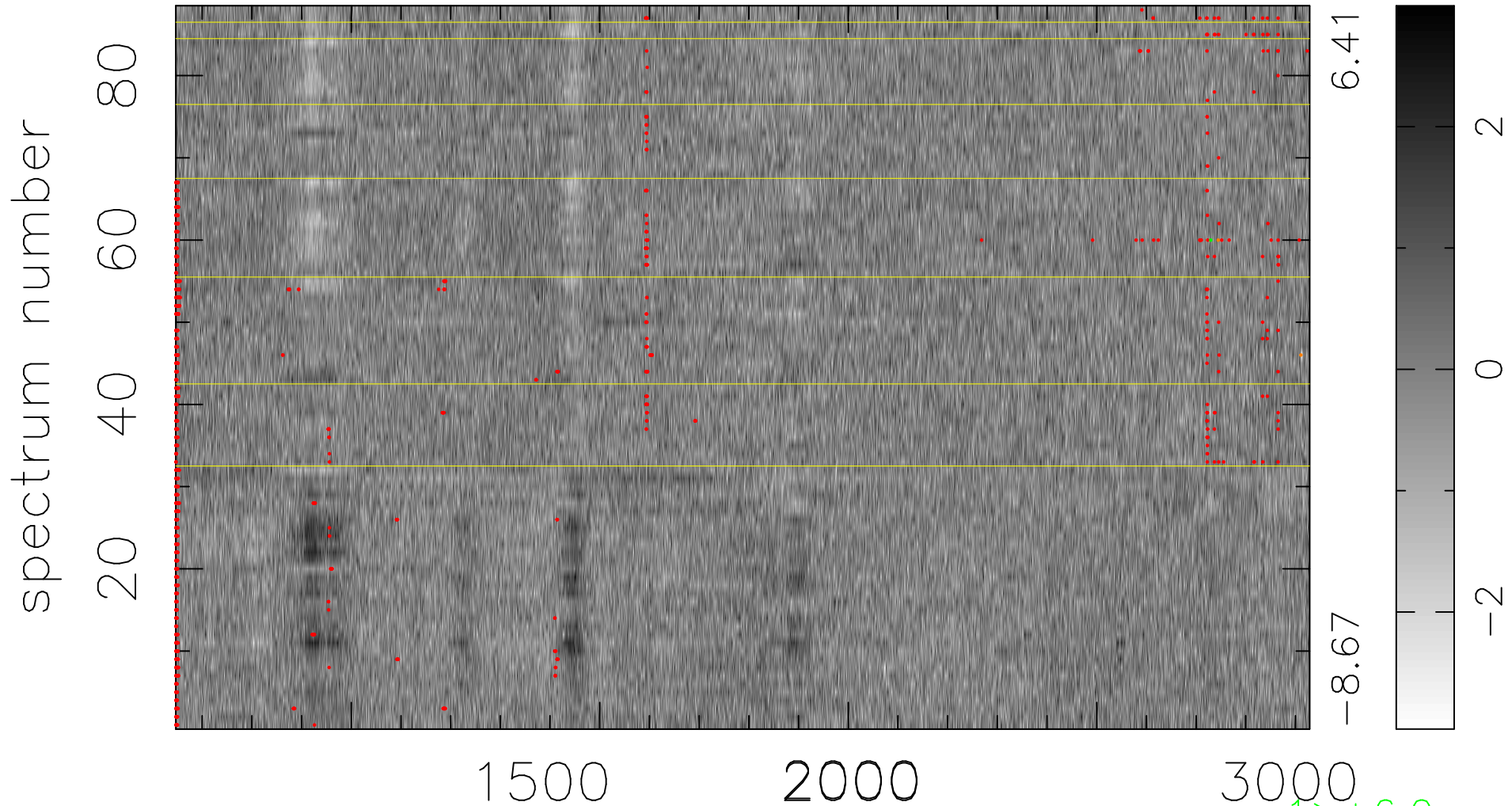


$$\chi(\lambda, t) = (\text{Data} - \text{Model } AC_5) / \sigma \chi$$

$$\chi^2 / (401632 - 5219) = 1.081 \Rightarrow 1.008$$

4564x88



bad:987=0.25%

λ (Å) $z = 2.36988$

1 > +6.0 σ

2 < -6.0 σ