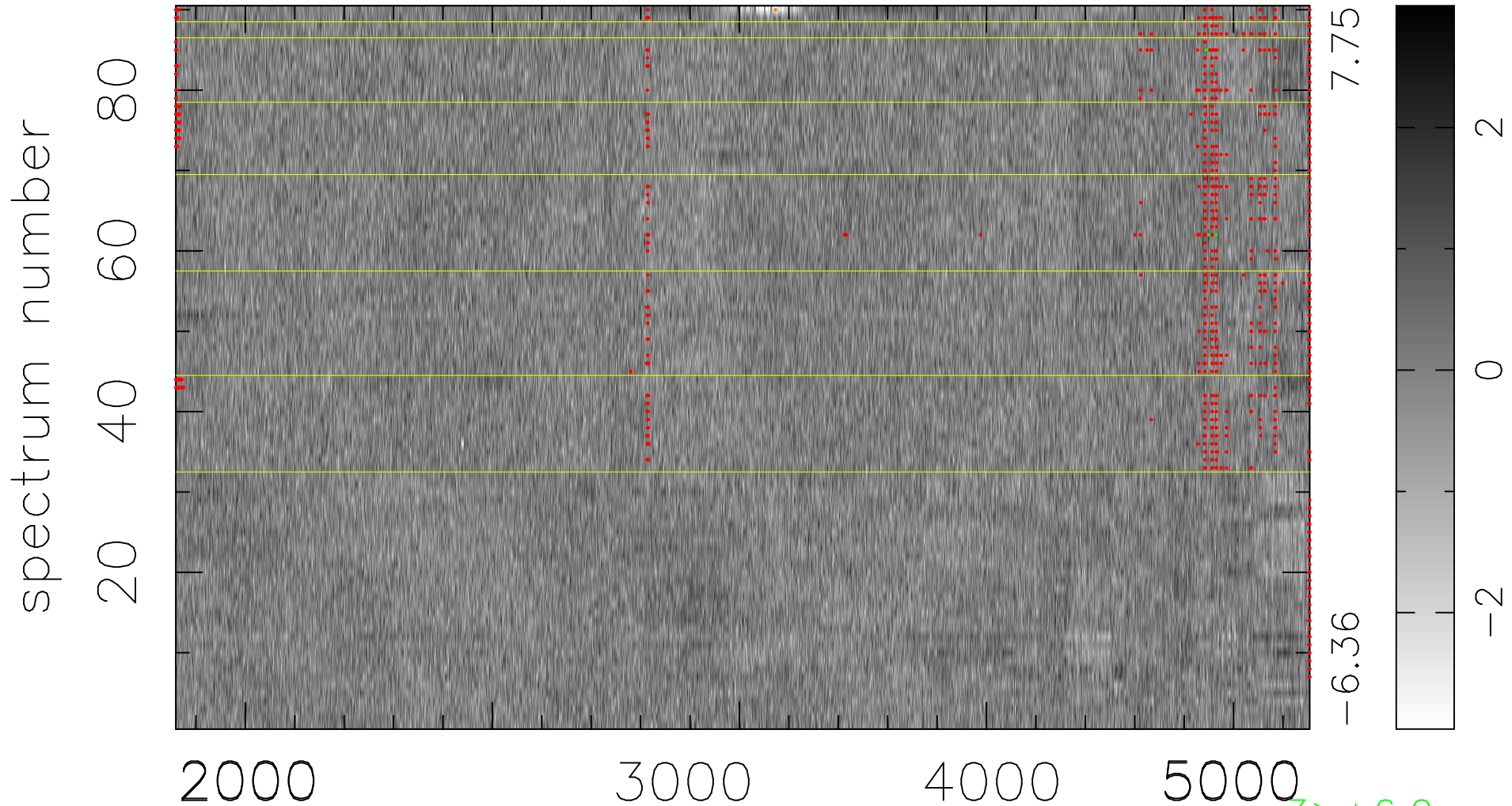


$$\chi(\lambda, t) = (\text{Data} - \text{Model } \text{AC}_5\text{B}_4\text{F}) / \sigma \chi$$

$$\chi^2 / (413100 - 5156) = 1.106 \Rightarrow 1.008$$

4590x90



bad:1023=0.25% λ (Å) $z = 0.92136$

3 > +6.0σ

1 < -6.0σ