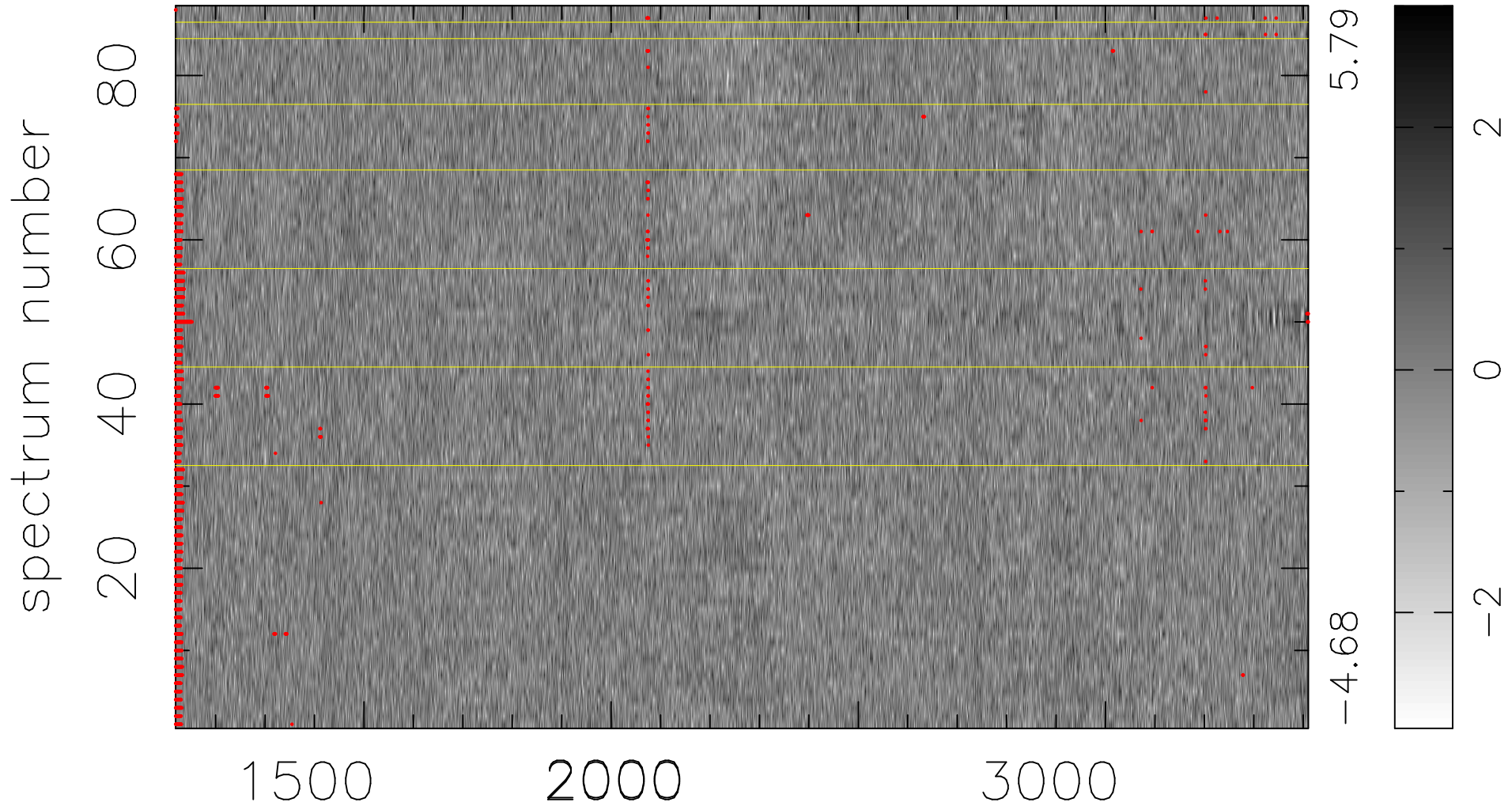


$$\chi(\lambda, t) = ( \text{Data} - \text{Model } \text{AC}_5\text{B}_5\text{F} ) / \sigma \chi$$

$$\chi^2 / (403304 - 5299) = 0.913 \Rightarrow 1.008$$

4583x88



bad:2009=0.50%  $\lambda$  (Å)  $z = 1.70132$