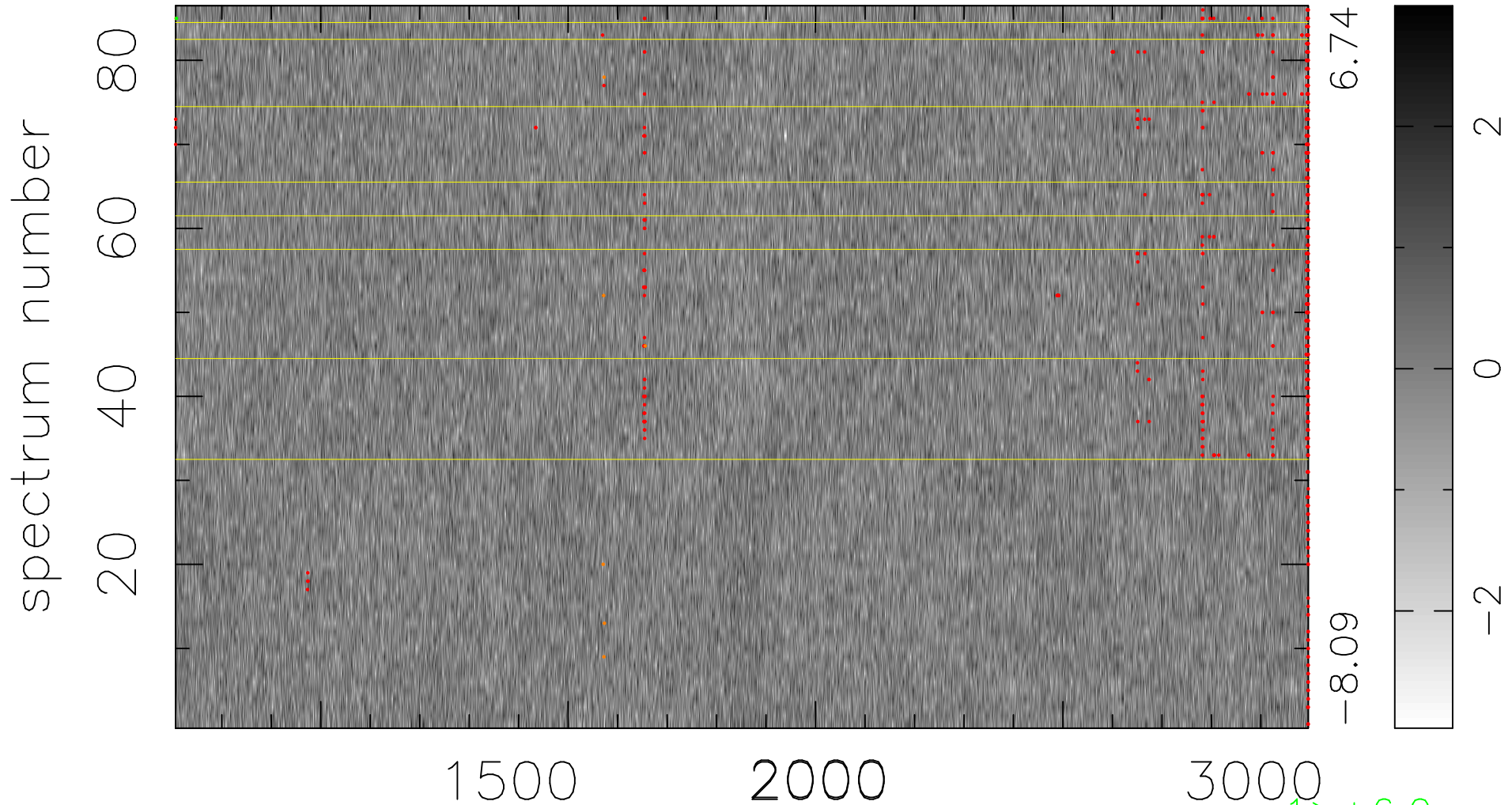


$$\chi(\lambda, t) = ( \text{Data} - \text{Model } \text{AC}_5\text{B}_7\text{F} ) / \sigma \chi$$

$$\chi^2 / (393794 - 5429) = 0.947 \Rightarrow 1.008$$

4579x86



bad:634=0.16%

$\lambda$  (Å)  $z = 2.27833$

1 > +6.0σ

7 < -6.0σ