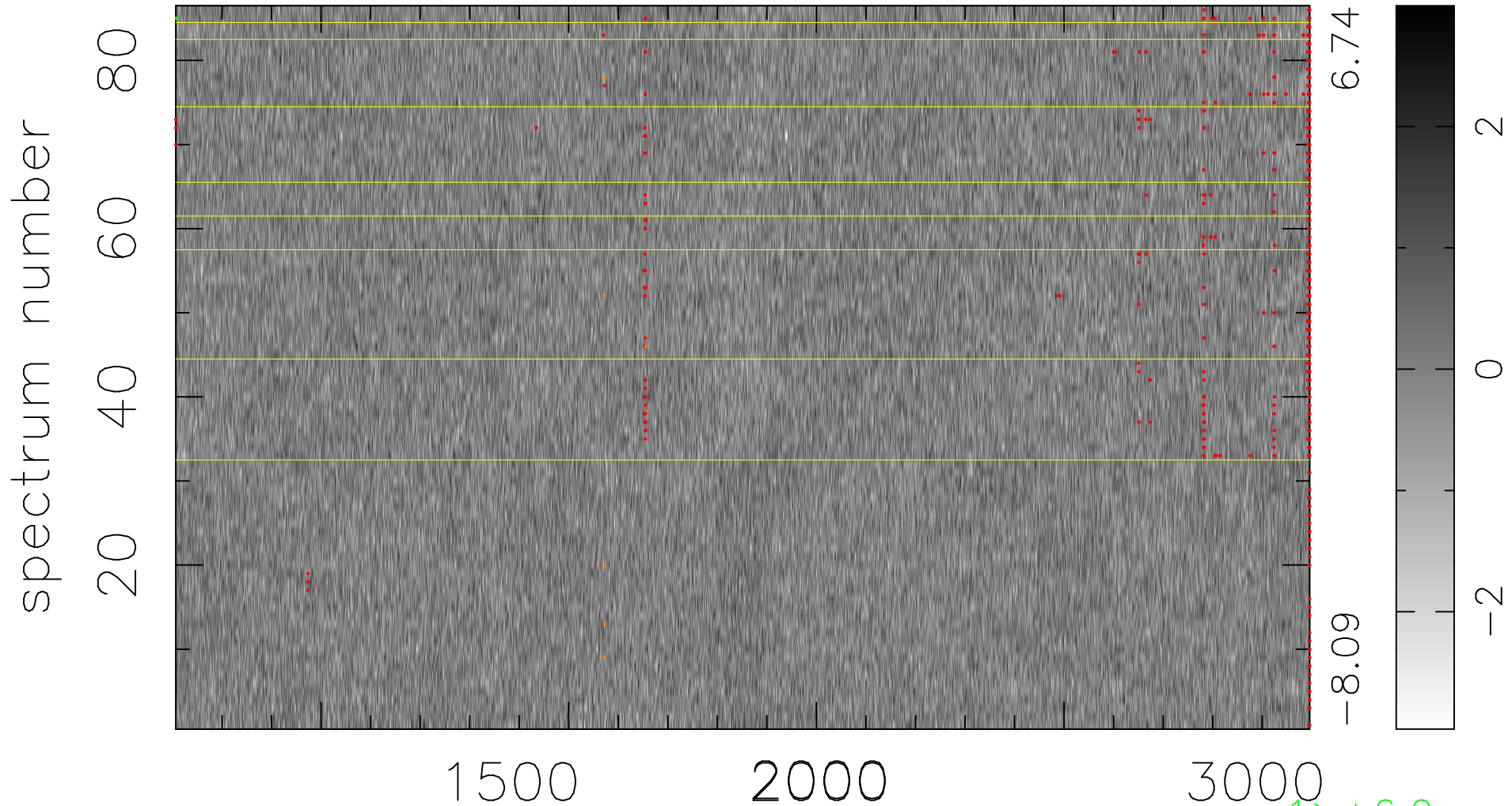


$$\chi(\lambda, t) = (\text{Data} - \text{Model } AC_5) / \sigma \chi$$

$\chi^2 / (393794 - 5197) = 0.948 \Rightarrow 1.008$

4579x86



bad:634=0.16%

λ (Å) $z = 2.27833$

1 > +6.0σ

7 < -6.0σ