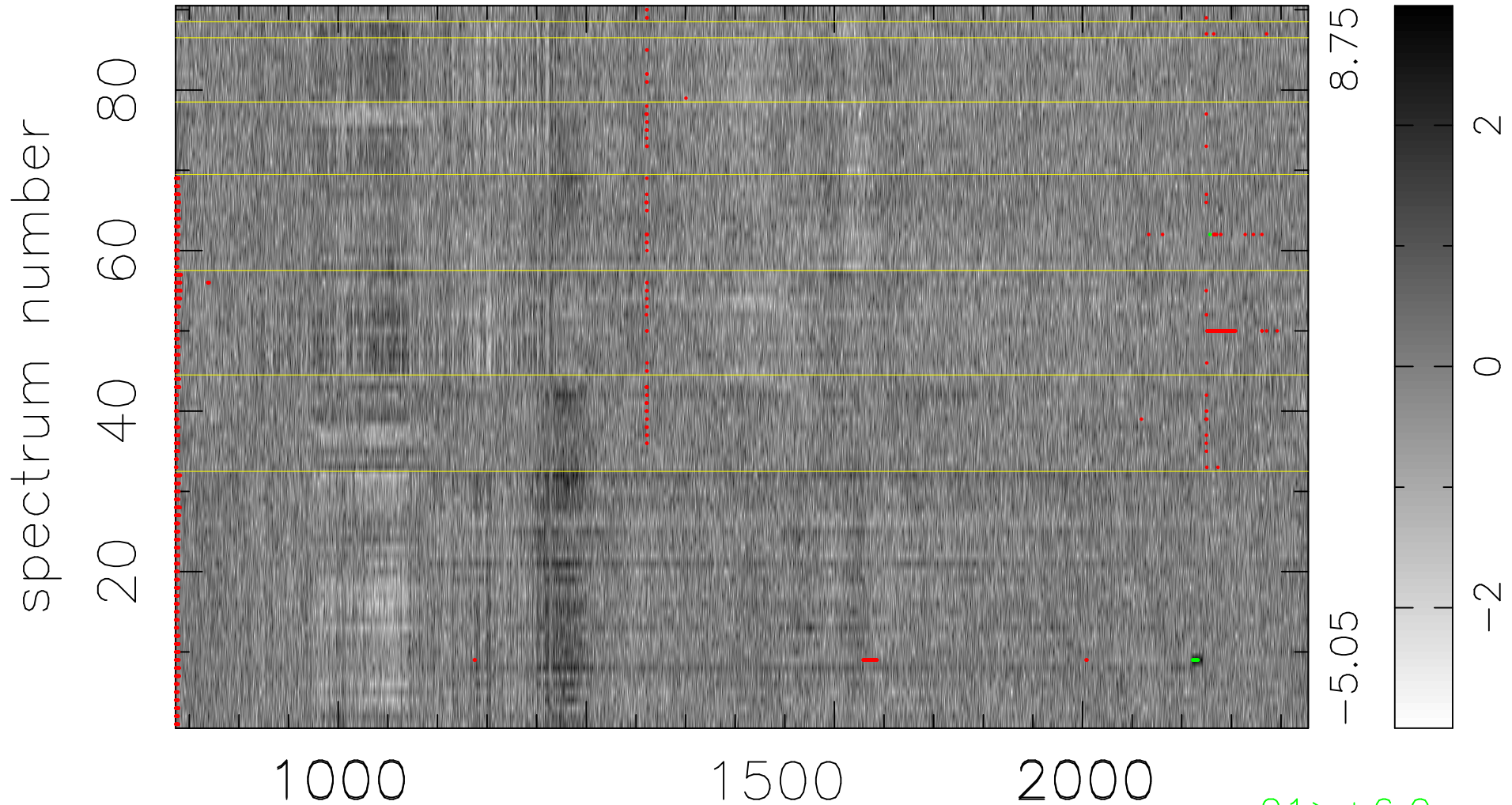


$$\chi(\lambda, t) = ( \text{Data} - \text{Model } \text{AC}_5\text{B}_6\text{F} ) / \sigma \chi$$

$$\chi^2 / (410940 - 5367) = 1.012 \Rightarrow 1.012$$

4566x90



bad:1183=0.29%  $\lambda$  (Å)  $z = 3.18913$

21 > +6.0 $\sigma$