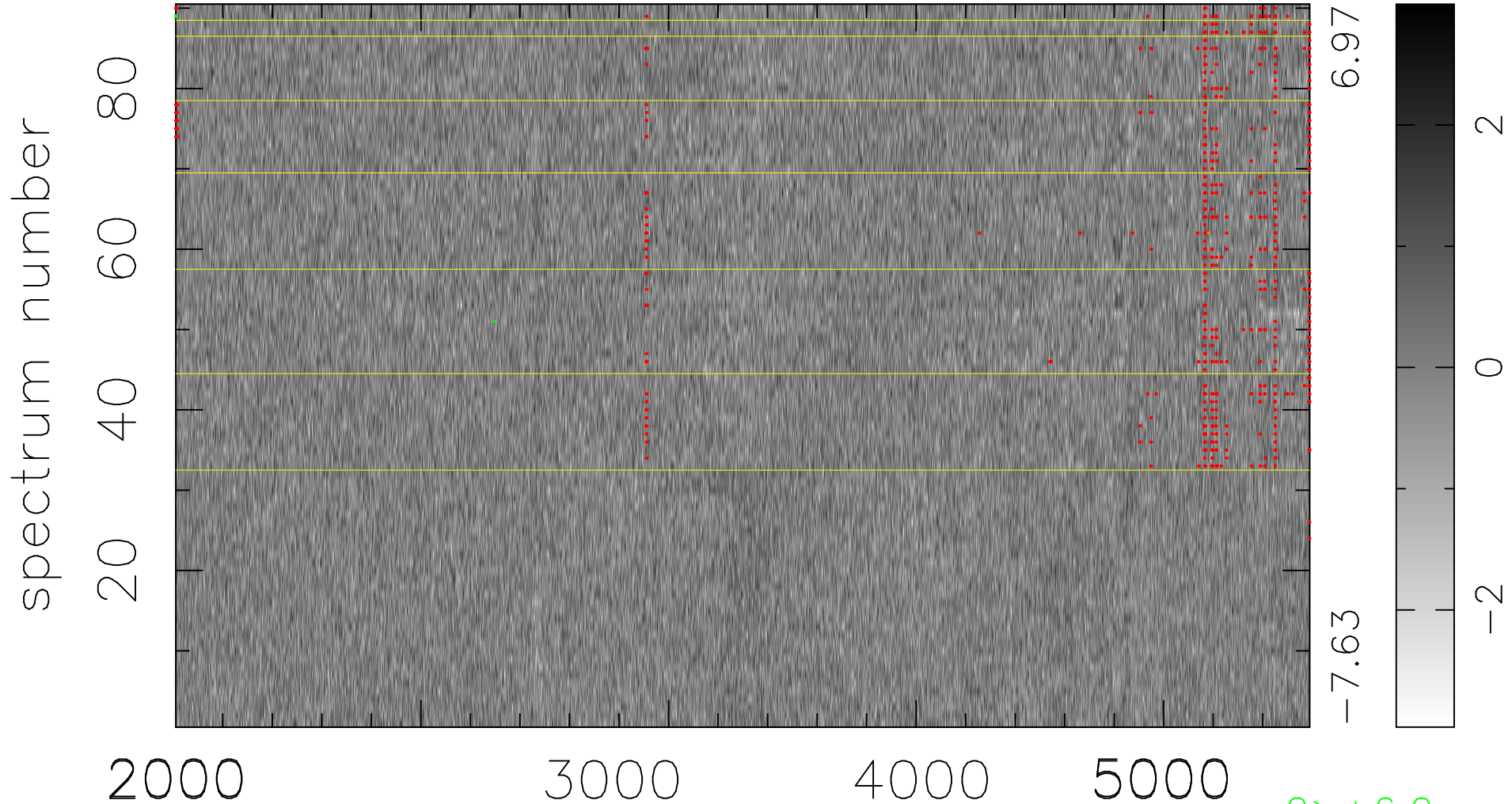


$$\chi(\lambda,t) = (\text{Data} - \text{Model } AC_5) / \sigma \chi$$

$$\chi^2 / (412200 - 4878) = 0.906 \Rightarrow 1.007$$

4580x90



bad:625=0.15%

λ (Å) $z = 0.80048$

2 > +6.0σ

1 < -6.0σ