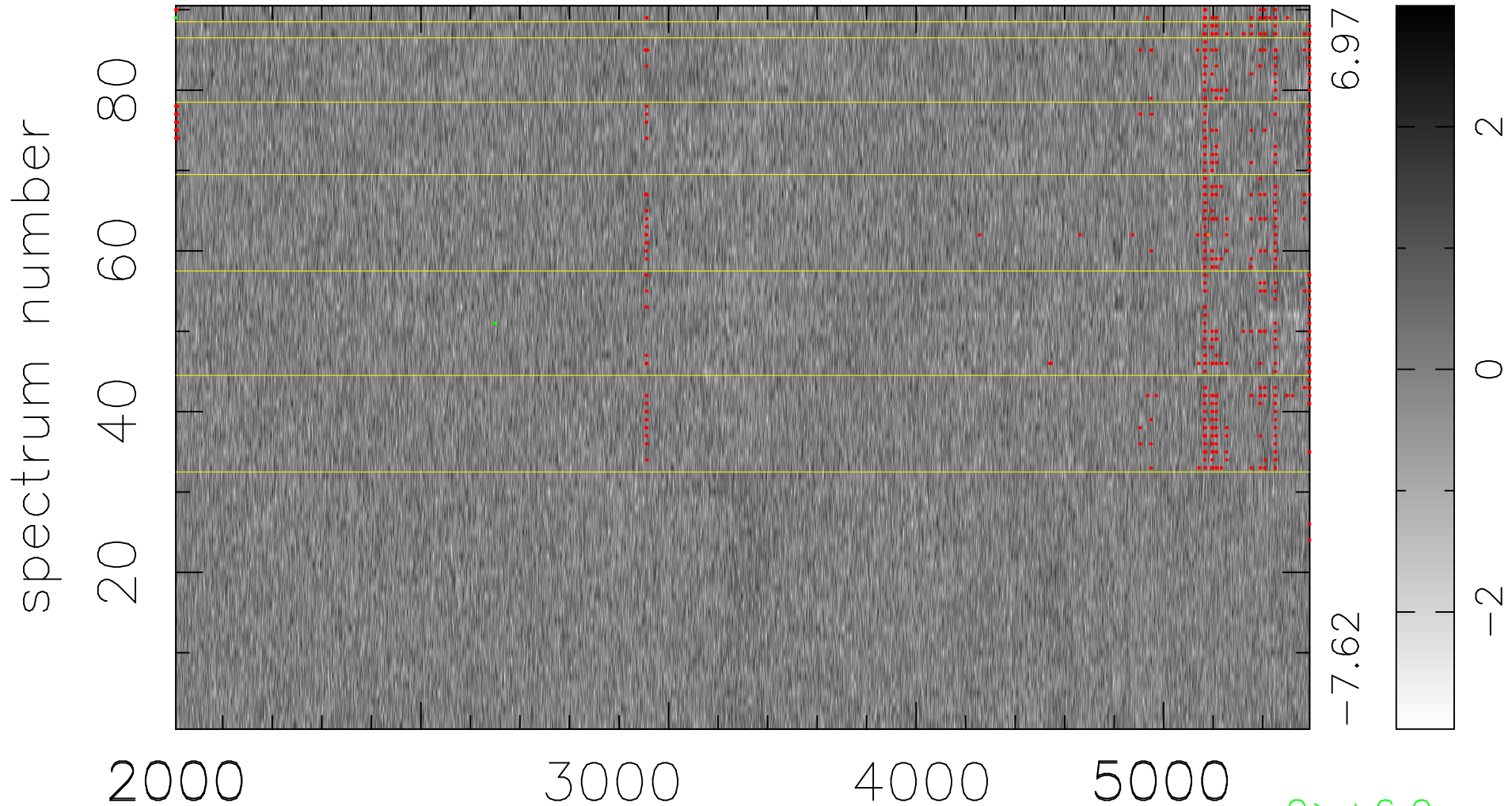


$$\chi(\lambda, t) = ( \text{Data} - \text{Model } \text{AC}_5\text{B}_3\text{F} ) / \sigma \chi$$

$$\chi^2 / (412200 - 5142) = 0.904 \Rightarrow 1.007$$

4580x90



bad:625=0.15%

$\lambda$  (Å)  $z = 0.80048$

2 > +6.0 $\sigma$

1 < -6.0 $\sigma$