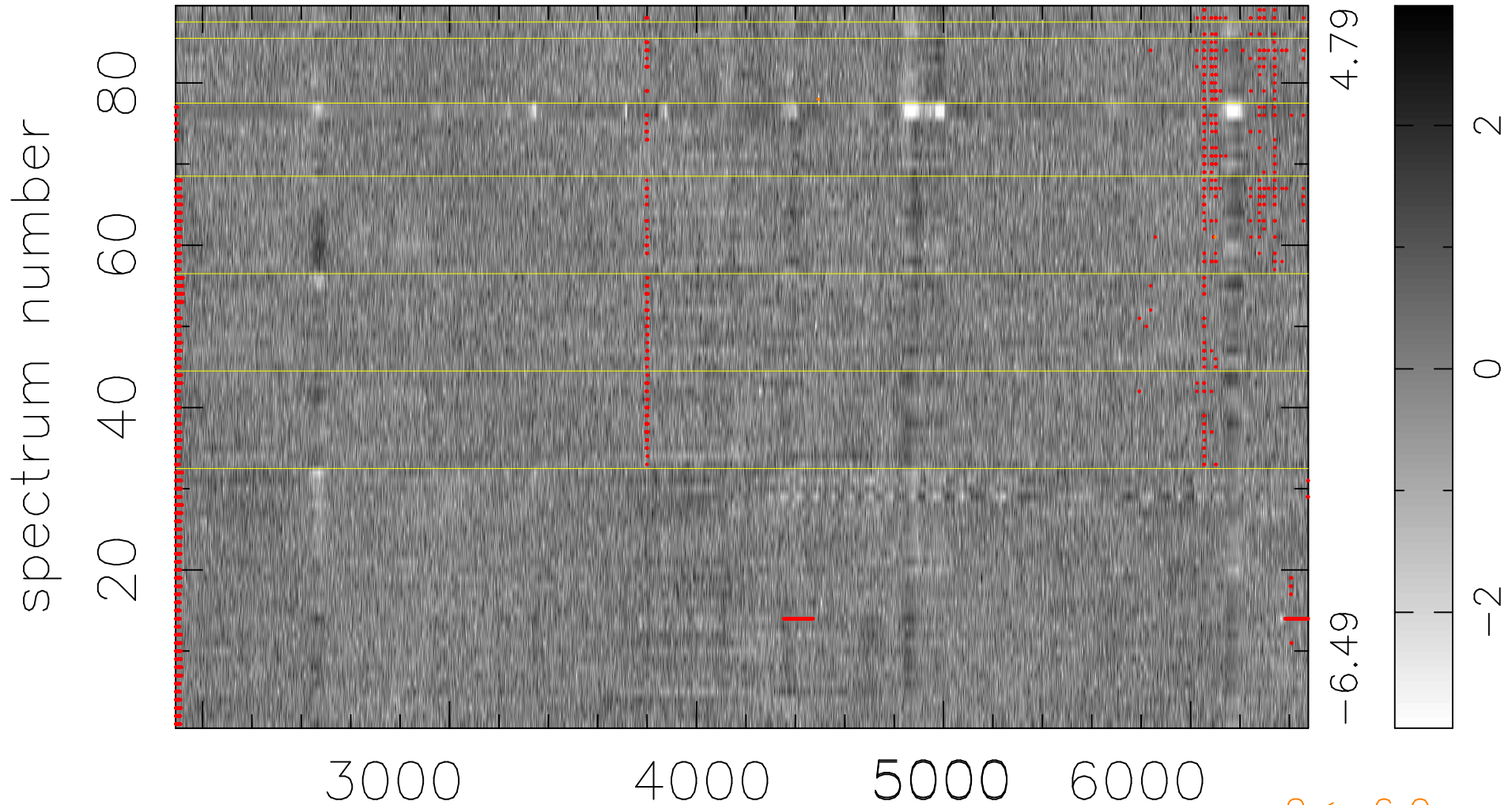


$$\chi(\lambda,t) = ( \text{Data} - \text{Model } AC_5 ) / \sigma \chi$$

$$\chi^2 / (408154 - 4975) = 1.180 \Rightarrow 1.004$$

4586x89



$2 < -6.0\sigma$

bad:2351=0.58%  $\lambda$  (Å)  $z = 0.46750$