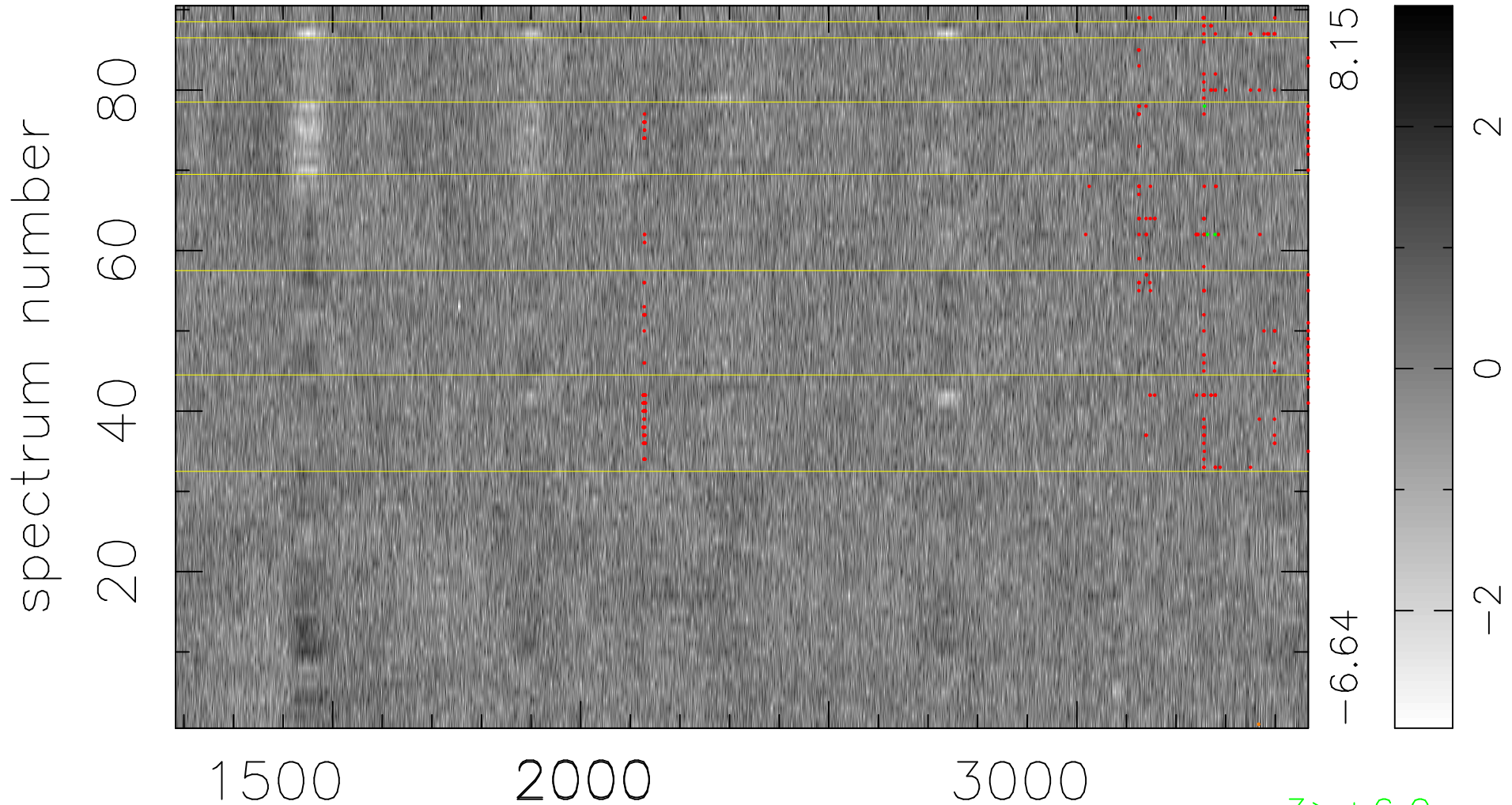


$$\chi(\lambda, t) = ( \text{Data} - \text{Model AC}_5\text{F} ) / \sigma \chi$$

$$\chi^2 / (411030 - 5135) = 0.953 \Rightarrow 1.007$$

4567x90



bad:265=0.064%  $\lambda$  (Å)  $z = 1.63518$

3 > +6.0σ  
1 < -6.0σ