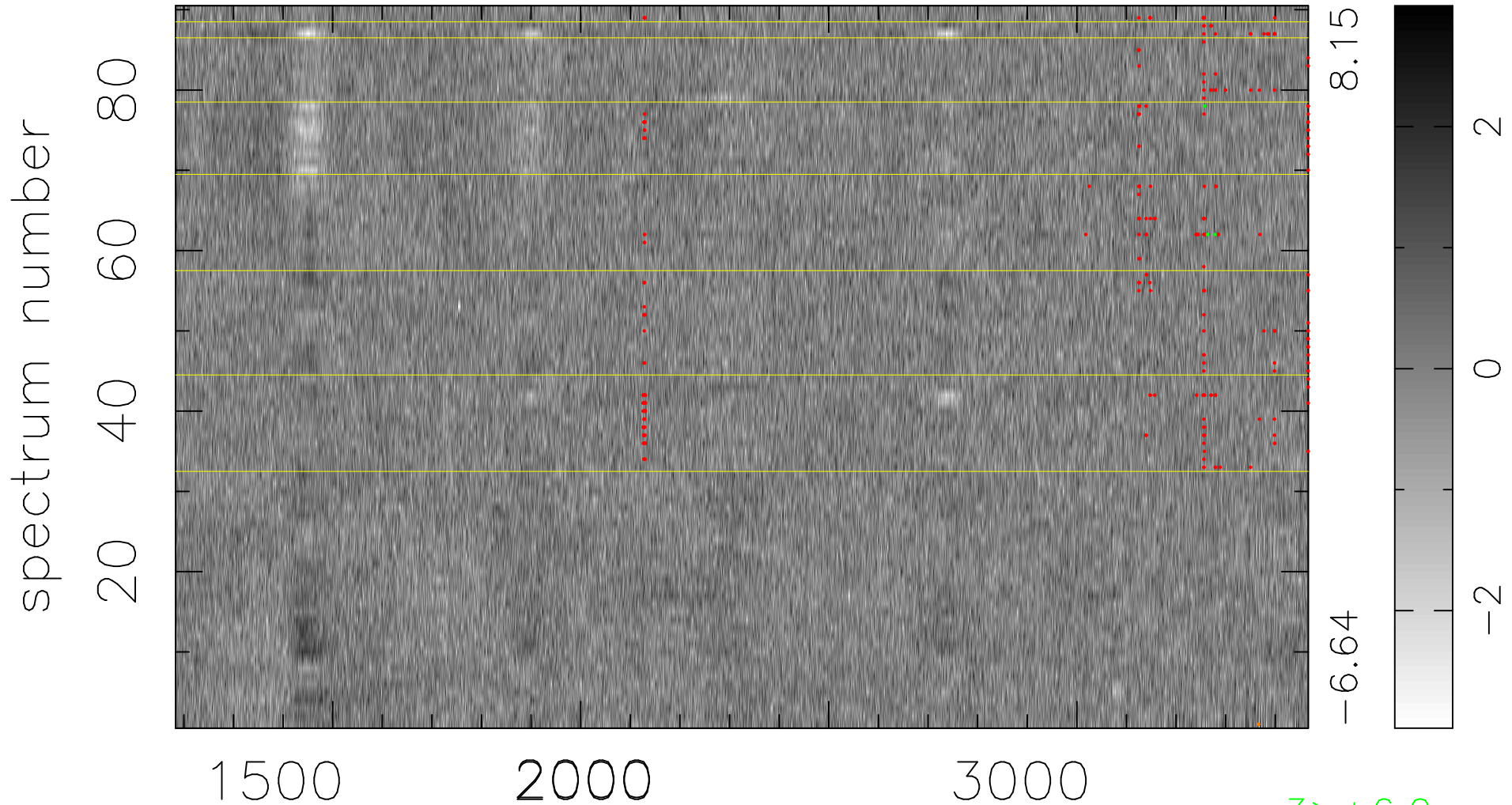


$$\chi(\lambda, t) = (\text{Data} - \text{Model } AC_5) / \sigma \chi$$

$$\chi^2 / (411030 - 5045) = 0.954 \Rightarrow 1.007$$

4567x90



bad:265=0.064% λ (Å) $z = 1.63518$

3 > +6.0 σ

1 < -6.0 σ