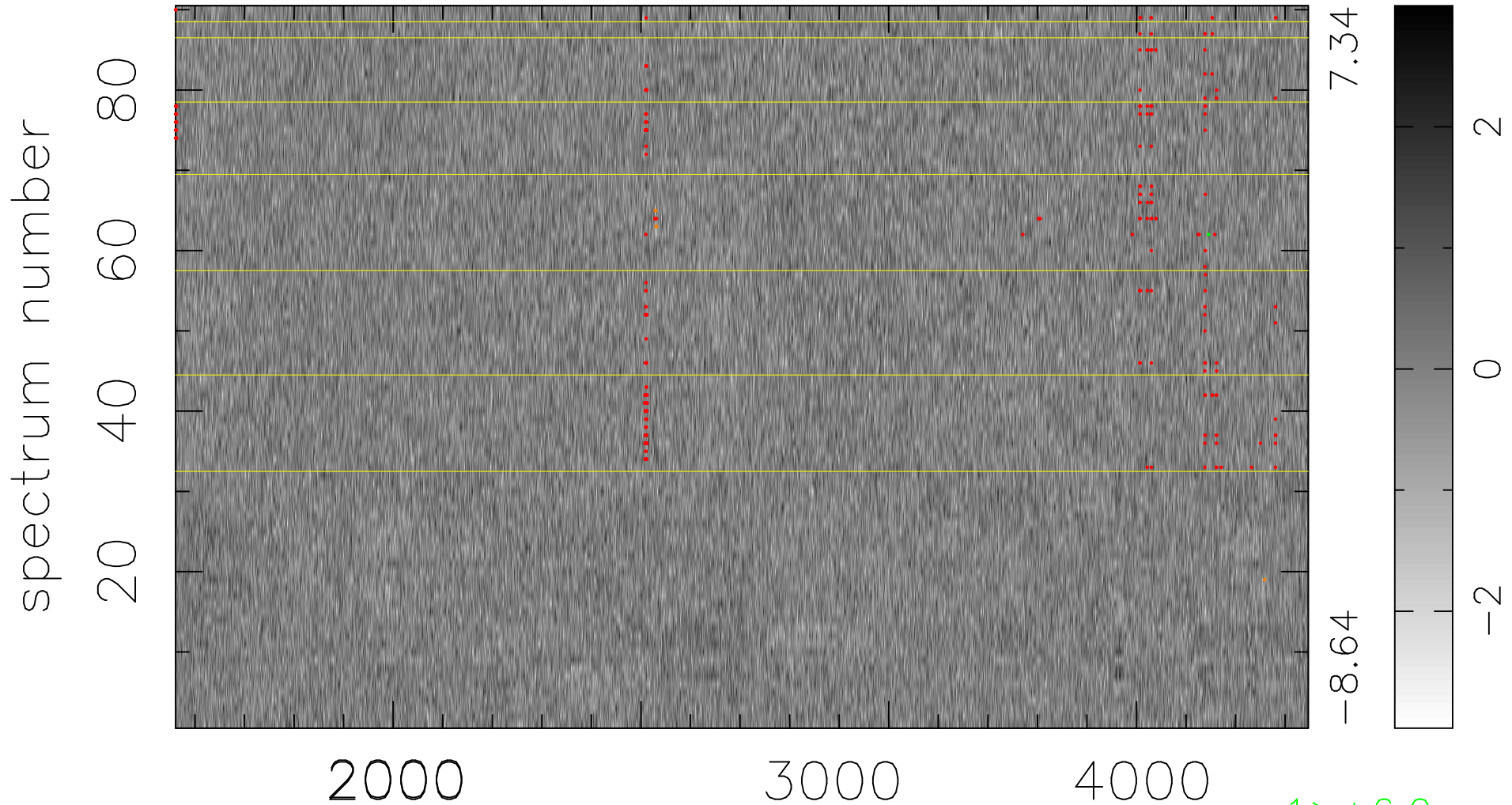


$$\chi(\lambda, t) = (\text{Data} - \text{Model } \text{AC}_5\text{B}_3\text{F}) / \sigma \chi$$

$$\chi^2 / (411480 - 5127) = 0.946 \Rightarrow 1.007$$

4572x90



bad:281=0.068% λ (Å) $z = 1.21004$

1 > +6.0 σ

7 < -6.0 σ