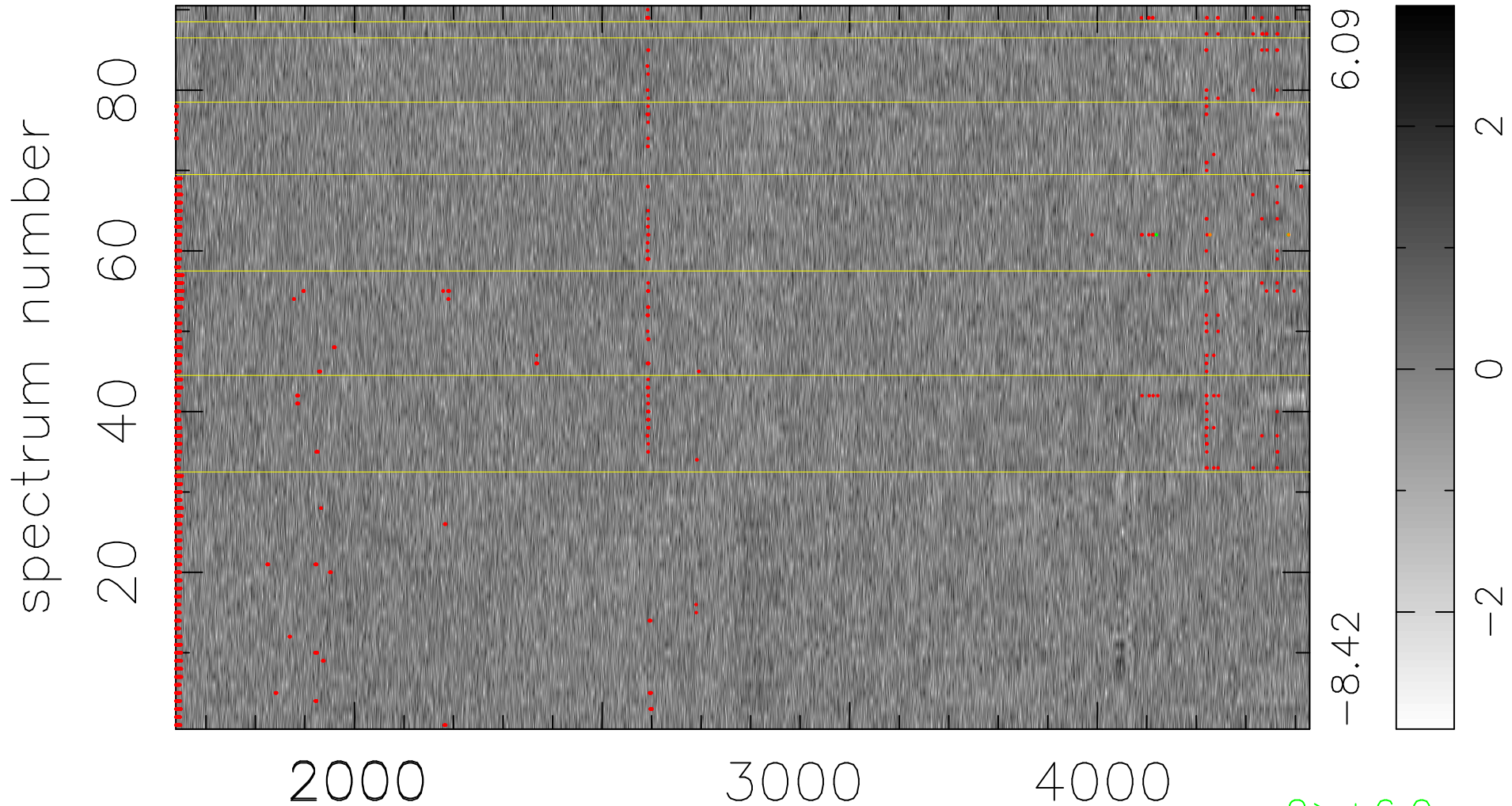


$$\chi(\lambda, t) = (\text{Data} - \text{Model } \text{AC}_5\text{B}_3\text{F}) / \sigma \chi$$

$$\chi^2 / (412200 - 5137) = 1.042 \Rightarrow 1.007$$

4580x90



bad:1849=0.45% λ (Å) $z = 1.12791$

2 > +6.0 σ

2 < -6.0 σ