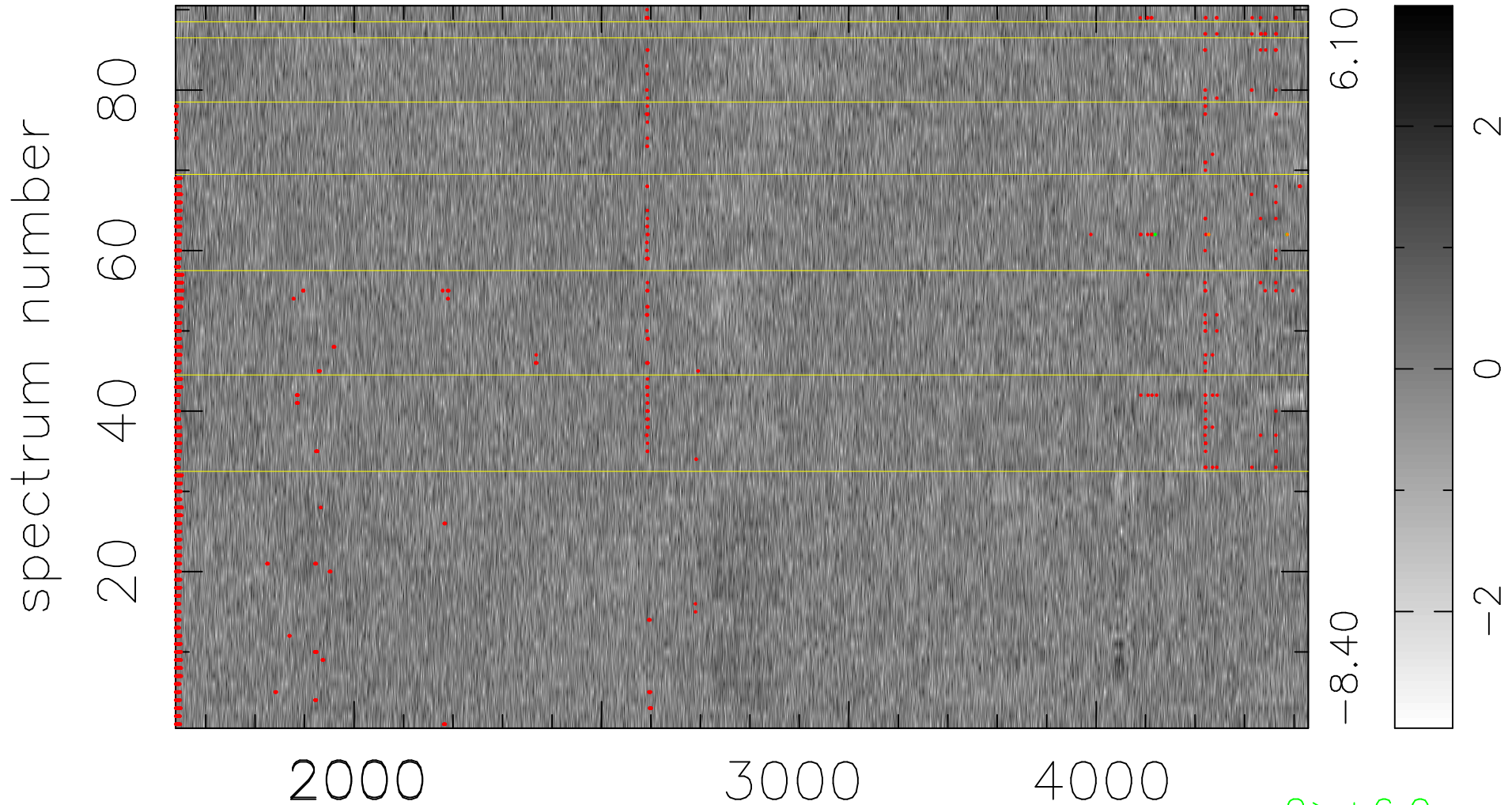


$$\chi(\lambda,t) = ( \text{Data} - \text{Model } AC_5 ) / \sigma \chi$$

$$\chi^2 / (412200 - 4877) = 1.044 \Rightarrow 1.007$$

4580x90



bad:1849=0.45%  $\lambda$  (Å)  $z = 1.12791$

2 > +6.0 $\sigma$

2 < -6.0 $\sigma$