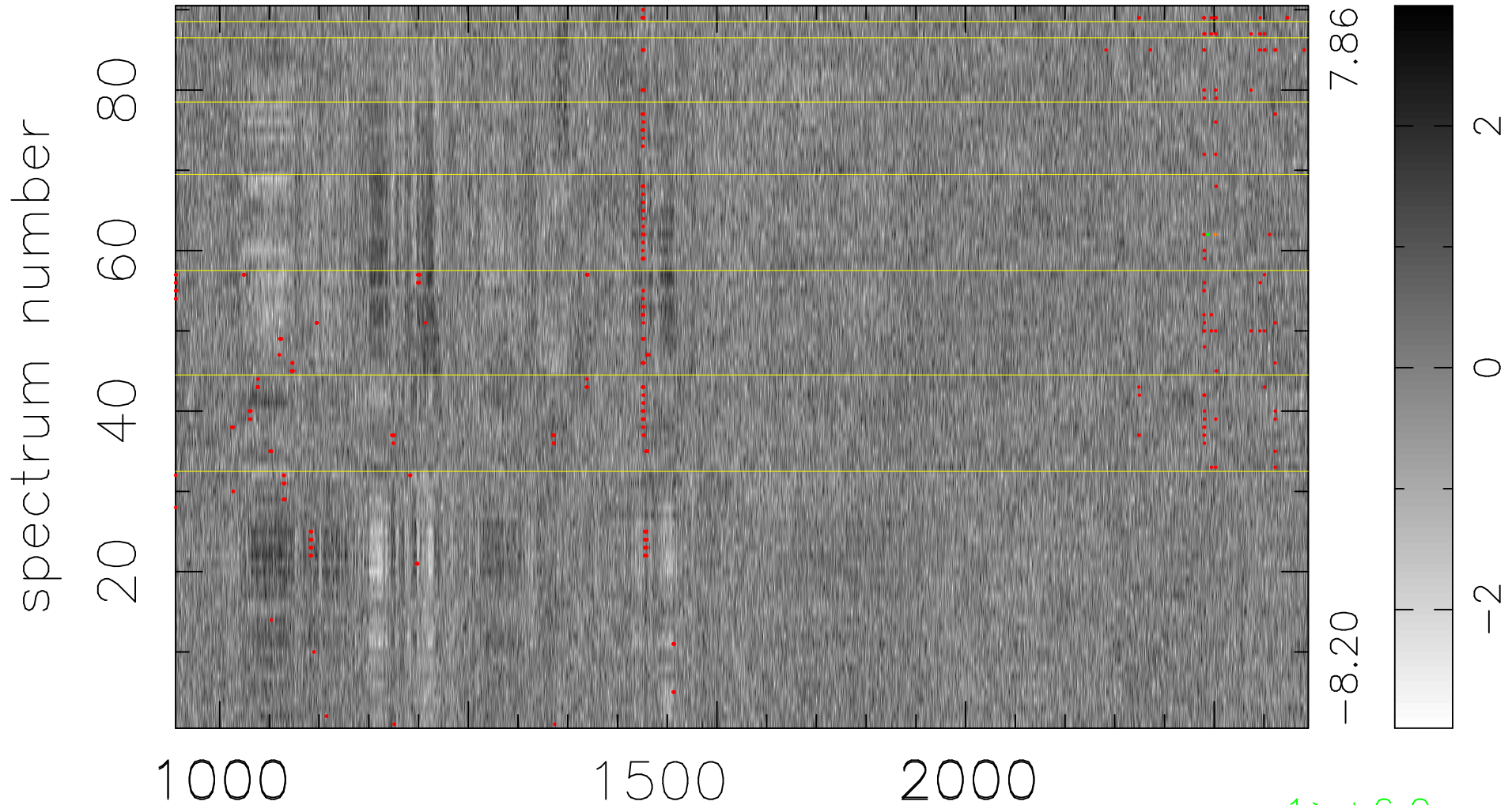


$$\chi(\lambda, t) = ( \text{Data} - \text{Model } \text{AC}_5\text{B}_6\text{F} ) / \sigma \chi$$

$$\chi^2 / (410040 - 5382) = 1.113 \Rightarrow 1.009$$

4556 × 90



bad:457=0.11%

$\lambda$  (Å)  $z = 2.76791$

1 > +6.0 $\sigma$

1 < -6.0 $\sigma$