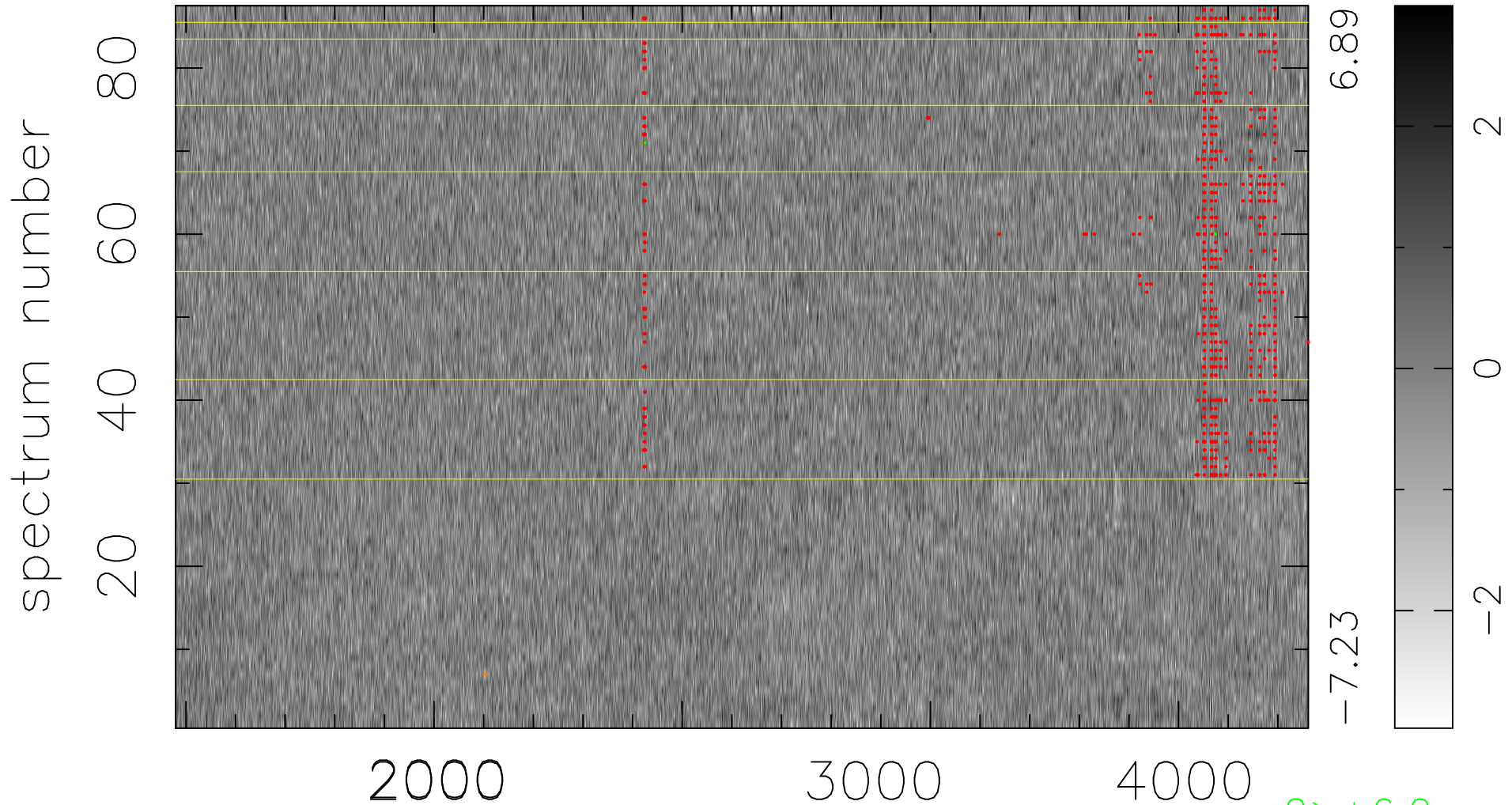


$$\chi(\lambda, t) = (\text{Data} - \text{Model } \text{AC}_5\text{B}_3\text{F}) / \sigma \chi$$

$$\chi^2 / (397155 - 5109) = 1.059 \Rightarrow 1.008$$

4565x87



bad:719=0.18%

λ (Å) $z = 1.29956$

2 > +6.0σ

2 < -6.0σ