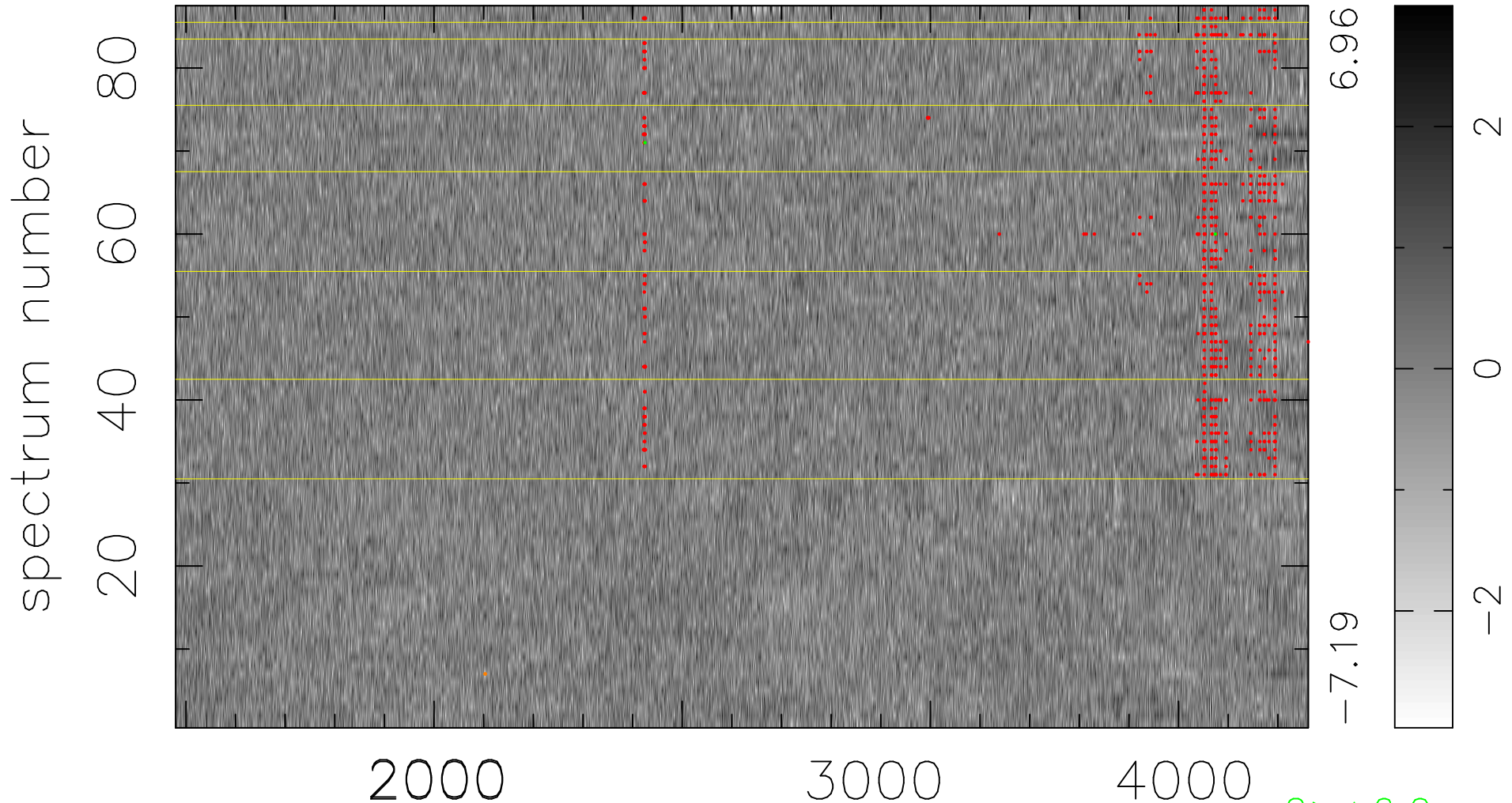


$$\chi(\lambda, t) = ( \text{Data} - \text{Model AC}_5\text{F} ) / \sigma \chi$$

$$\chi^2 / (397155 - 4936) = 1.064 \Rightarrow 1.007$$

4565x87



bad:719=0.18%

$\lambda$  (Å)  $z = 1.29956$

$2 > +6.0\sigma$

$2 < -6.0\sigma$